



Spare parts - Options

CTT 200/210/215/230/300

rev. L

DI-ZET

Praktyczne rozwiązania w systemach pakowania

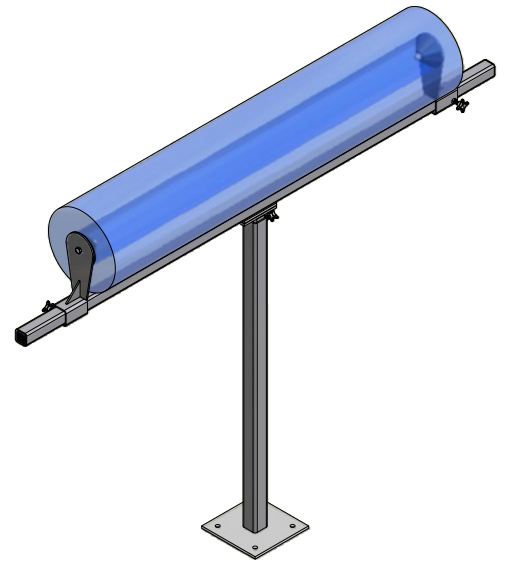
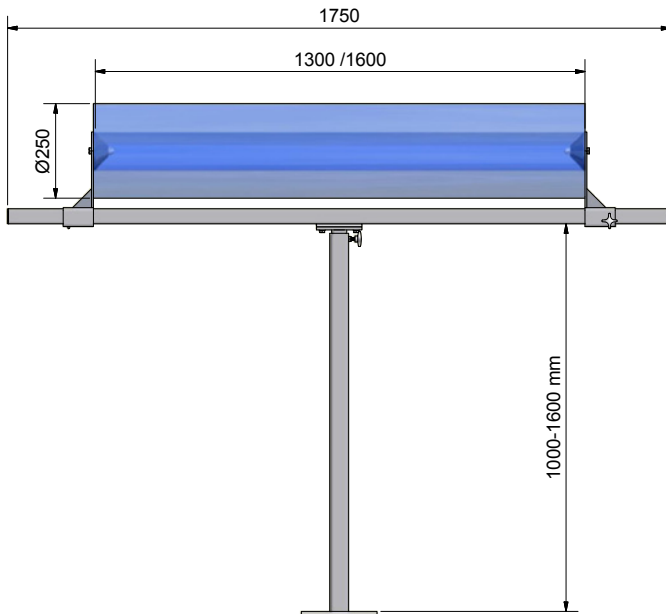
Revision	Note	Date
A	Initial release. 210381 - Round top plate	20141027
B	210080, 210081, 210282, 210355, 210373, 210372, 210380, 210387, 210395, 210390, 210389, 210375, 210377, 210383, 210413 & 210414 added.	20150120
C	210405, 210421 & 210426 added.	20150130
D	210431, 210432 & 210254 added. 210380 & 210389 - corrected faulty text of part description.	20150602
E	210397	20151124
F	901770, 210414, 210426, 210404, 210480, 210485 added. 210406 part no corrected.	20160204
G	CTT 200 added	20160419
H	210427 added	20170111
I	210556 added	20170515
J	New design & CTT 205 replaced by CTT 210	20171208
K	Top plates for LH=2200/2600mm were earlier the same part no. Now they have individual numbers. See Ch. D & J. CTT 300 added. 210532 added.	20180920
L	210579 added.	20190527

CONTENTS

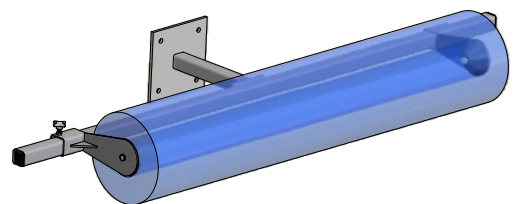
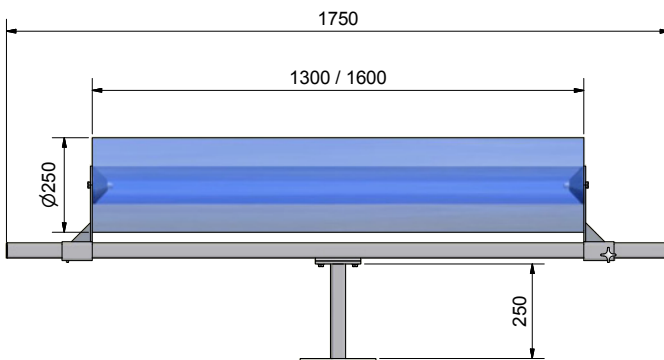
Ch.	Part. No.	Option	Available for machine:					Page
			CTT 200	CTT 210	CTT 215	CTT 230	CTT 300	
A	Top sheet dispensers							
	210080	Top sheet dispenser, floor	•	•	•	•	•	5
	210081	Top sheet dispenser, wall	•	•	•	•	•	5
B	Sensors for pallet height recognition							
	210282	Ultrasonic sensor	•	•	•	•	•	6
	901770	Laser sensor	•	•	•	•	•	6
C	Floor protection frames							
	210355	Floor protection frame for Ø1650 mm table	•	•	•	•	•	7
	210406	Floor protection frame for Ø2200 mm table	•	•	•	•	•	8
	210414	Floor protection frame for Ø2200 mm table + 500 mm	•	•	•	•	•	9
D	Top plates for Ø1650 mm table							
	210373	Top plate, round Load height 2200 mm		•	•	•		10
	210372	Top plate, rectangular Load height 2200 mm		•	•	•		10
	210381	Top plate, round Load height 2200 mm					•	10
	210380	Top plate, rectangular Load height 2200 mm					•	10
	210519	Top plate, round Load height 2600 mm		•	•	•		11
	210518	Top plate, rectangular Load height 2600 mm		•	•	•		11
	210523	Top plate, round Load height 2600 mm					•	11
	210522	Top plate, rectangular Load height 2600 mm					•	11
	210387	Top plate, round Load height 3000 mm		•	•	•		12
	210395	Top plate, rectangular Load height 3000 mm		•	•	•		12
	210390	Top plate, round Load height 3000 mm					•	12
	210389	Top plate, rectangular Load height 3000mm					•	12
E	Access ramps							
	210375	Ramp, Ø1650 mm	•	•	•	•	•	22
	210377	Ramp, Ø2200 mm	•	•	•	•	•	23
	210528	Ramp for scale, Ø1650 mm	•	•	•	•	•	24
	210579	Ramp for scale, Ø2200 mm	•	•	•	•	•	25
F	Automatic cutting							
	210383	Cutting device					•	26
G	Scale							
	210405	Scale kit		•	•	•	•	27
	210413	Elevation feet for scale		•	•	•	•	28
H	Cabinet							
	210421	Button cover	•	•	•		•	29
	210431	Wall mounted cabinet	•	•	•	•	•	30
	210432	Stand alone cabinet (floor mounted)	•	•	•	•	•	31
I	Table							
	210426	Table with rough surface	•	•	•		•	32

210254	Film holder			•	•	•		•	33
Part.		Available for machine:							
Ch.	No.	Option	CTT 200	CTT 210	CTT 215	CTT 230	CTT 300	Page	
J Top plates for Ø2200 mm table									
	210397	Top plate, round	Load height 2200 mm		•	•	•		34
	210396	Top plate, rectangular	Load height 2200 mm		•	•	•		34
	210392	Top plate, round	Load height 2200 mm					•	34
	210391	Top plate, rectangular	Load height 2200 mm					•	34
	210521	Top plate, round	Load height 2600 mm		•	•	•		34
	210520	Top plate, rectangular	Load height 2600 mm		•	•	•		34
	210525	Top plate, round	Load height 2600 mm					•	34
	210524	Top plate, rectangular	Load height 2600 mm					•	34
	210399	Top plate, round	Load height 3000 mm		•	•	•		34
	210398	Top plate, rectangular	Load height 3000 mm		•	•	•		34
	210394	Top plate, round	Load height 3000 mm					•	34
	210393	Top plate, rectangular	Load height 3000mm					•	34
K Elevated chassis +100 mm (not for use with scale option)									
	210404	Elevated chassis +100 mm for Ø1650 mm		•	•	•	•	•	35
	210480	Elevated chassis +100 mm for Ø2200 mm		•	•	•	•	•	35
	210485	Elevated chassis +100 mm for Ø2200 + 500 mm		•	•	•	•	•	36
	210556	Elevated chassis +200 mm + impact protection, Ø1650		•	•	•	•	•	37
L Stretch film unit									
	210487	Passive anti-static eliminator		•	•	•	•	•	38
M Top plates for Ø2200 + 500 mm table									
	210532	Top plate, rectangular	Load height 3000mm		•	•	•		39

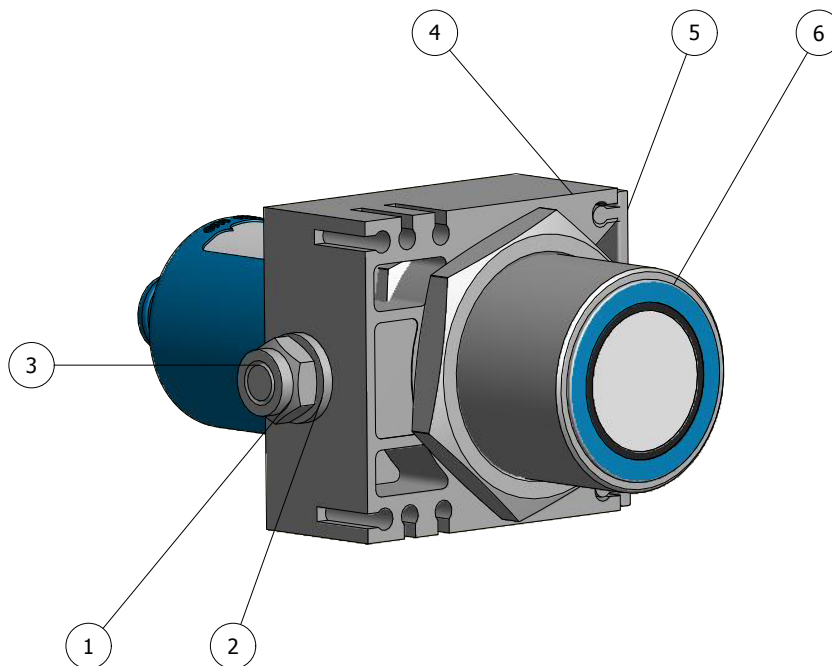
210080 - TOP SHEET DISPENSER FLOOR



210081 - TOP SHEET DISPENSER WALL

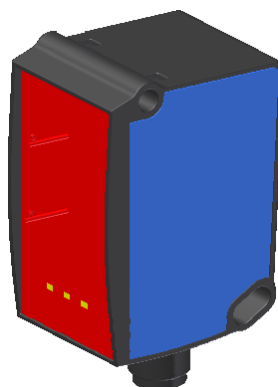


210282 - ULTRASONIC HEIGHT (OPTION)

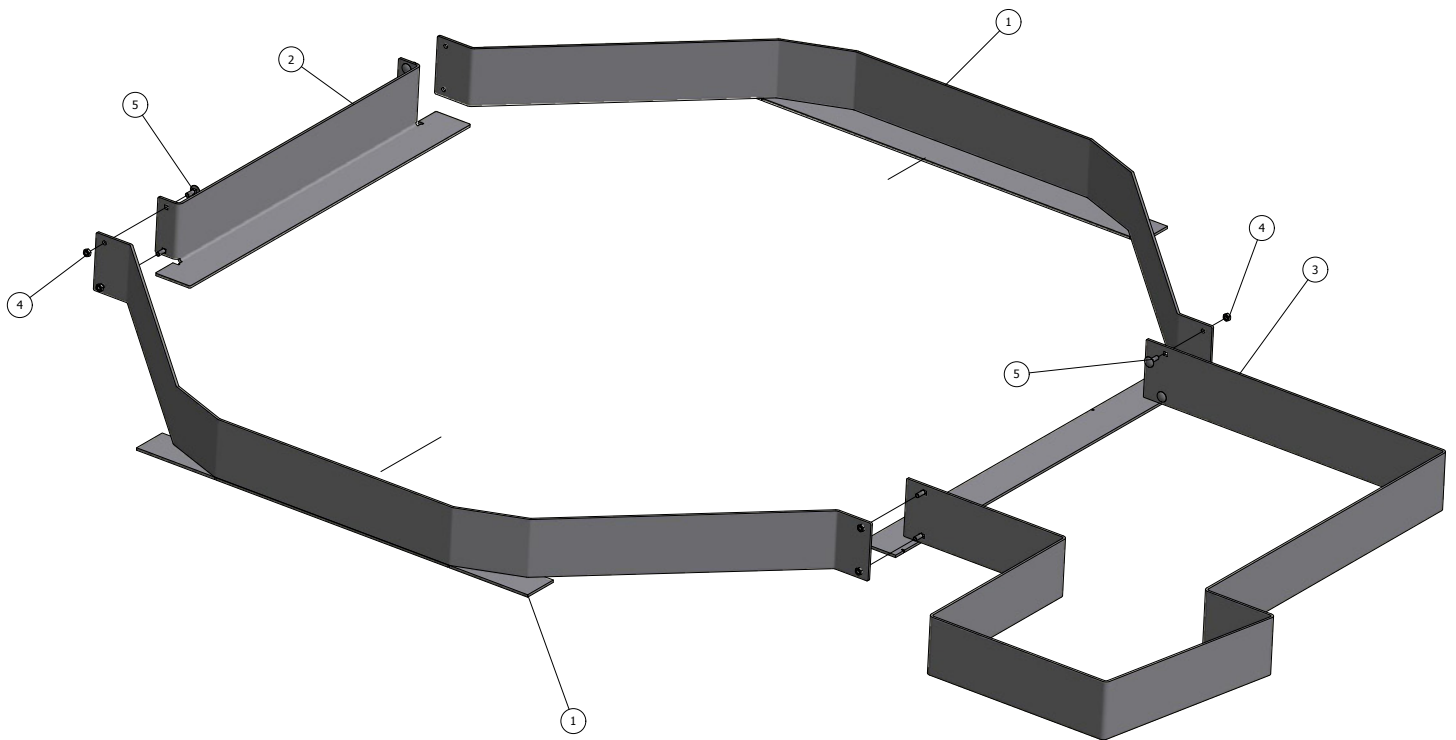


POS.	PART NO.	DESCRIPTION	Q.	NOTICE
1	460190	LOCKING NUT M6	1	
2	460200	WASHER BRB 6,4	1	
3	460206	MF6S M6x14	1	
4	900341	TUBEHOLDER	1	
5	900342	TOP FOR SUPPORT	1	
6	901083	ULTRASONIC SENSOR	1	

901770 - DISTANCE HEIGHT SENSOR (LASER)

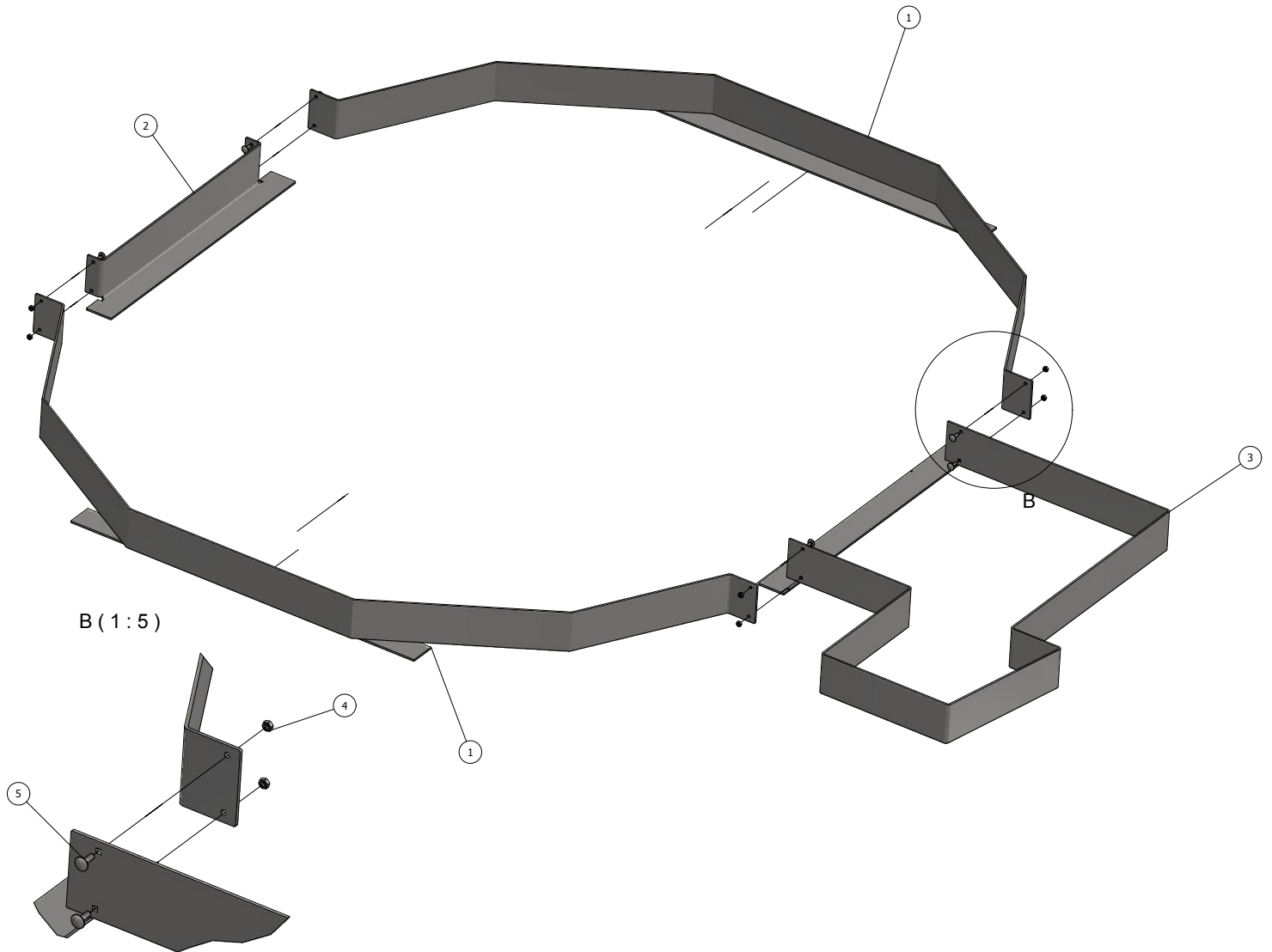


210355 - FLOOR PROTECTION FRAME, Ø1650 mm



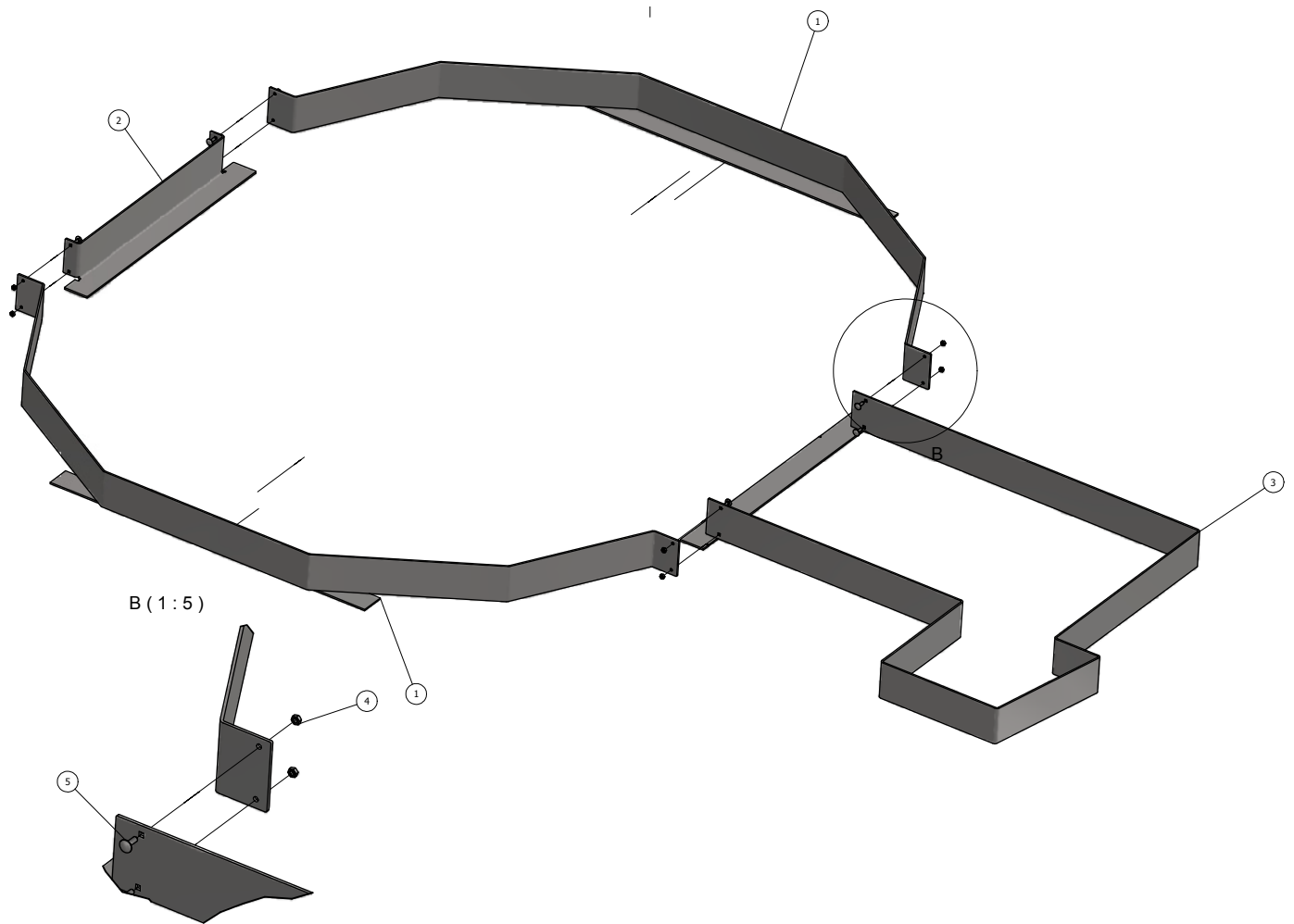
POS.	PART NO.	DESCRIPTION	Q.	NOTICE
1	371063	SIDE	2	
2	371064	FRONT	1	
3	371065	REAR	1	
4	460181	NUT M6M 8	8	
5	460549	CUP HEAD SQUARE NECK BOLT	8	

210406 - FLOOR PROTECTION FRAME, Ø2200 mm



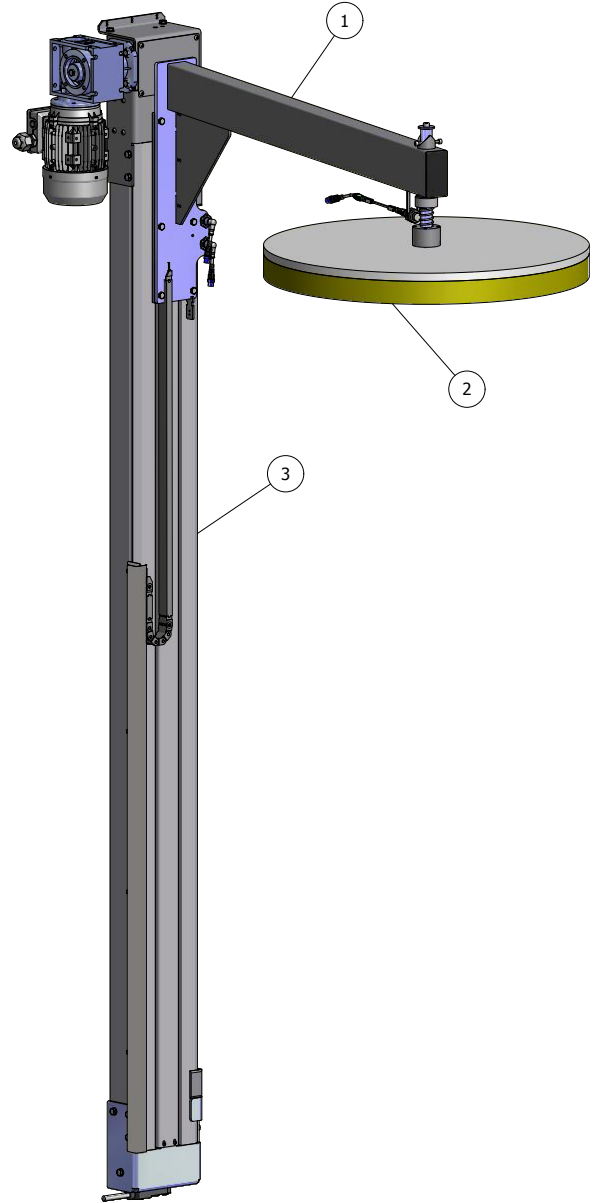
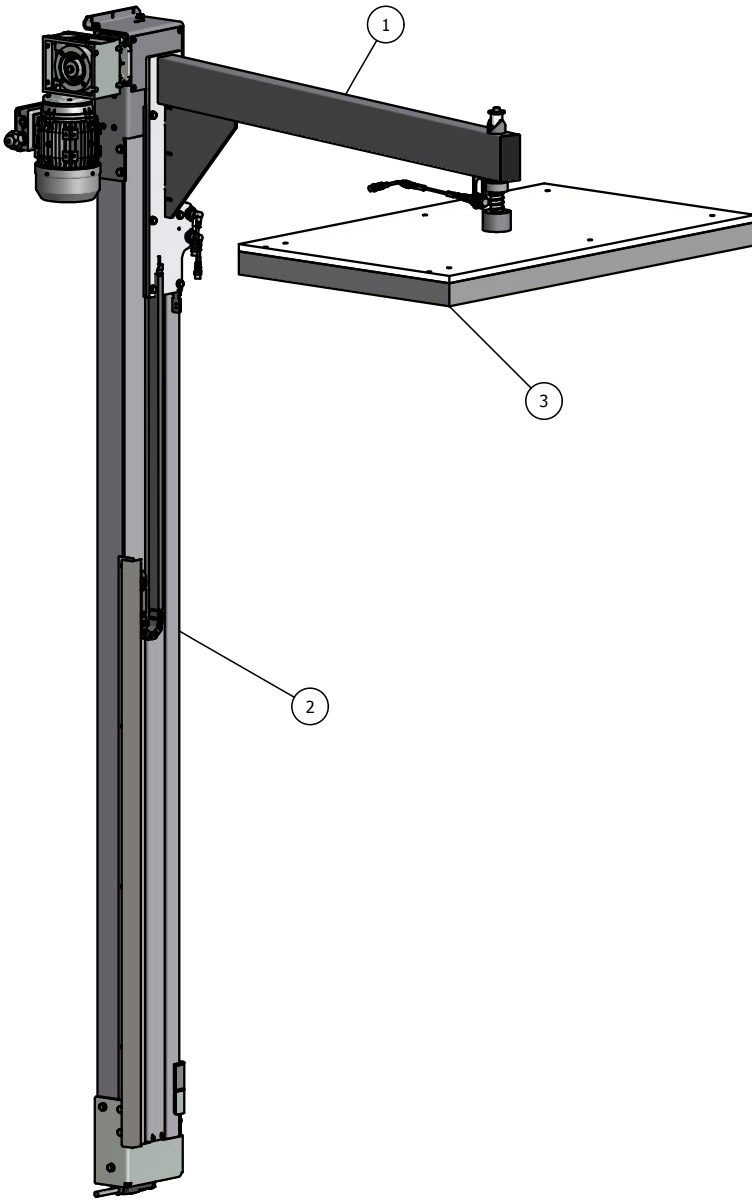
POS.	PART NO.	DESCRIPTION	Q.	NOTICE
2	371064	FRONT	1	
1	371217	SIDE	2	
3	371219	REAR	1	
4	460181	NUT M6M 8	8	
5	460549	CUP HEAD SQUARE NECK BOLT	8	

210414 - FLOOR PROTECTION FRAME, Ø2200mm + 500mm



POS.	PART NO.	DESCRIPTION	Q.	NOTICE
2	371064	FRONT	1	
1	371217	SIDE	2	
3	371496	REAR+500mm	1	
4	460181	NUT M6M 8	8	
5	460549	CUP HEAD SQUARE NECK BOLT	8	

TOP PLATE FOR MACHINE WITH: Load height 2200, table Ø1650 mm



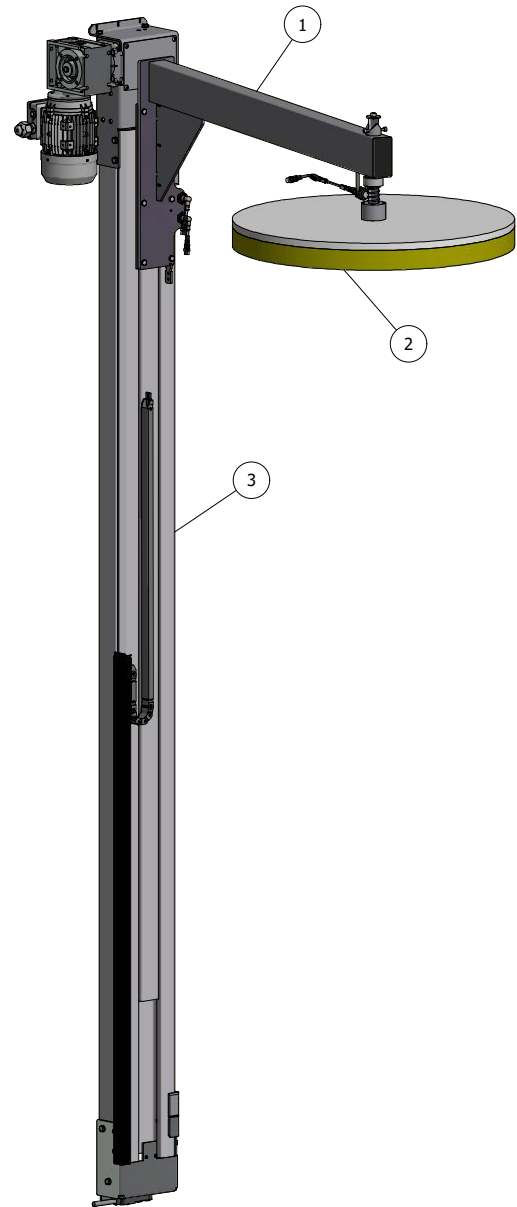
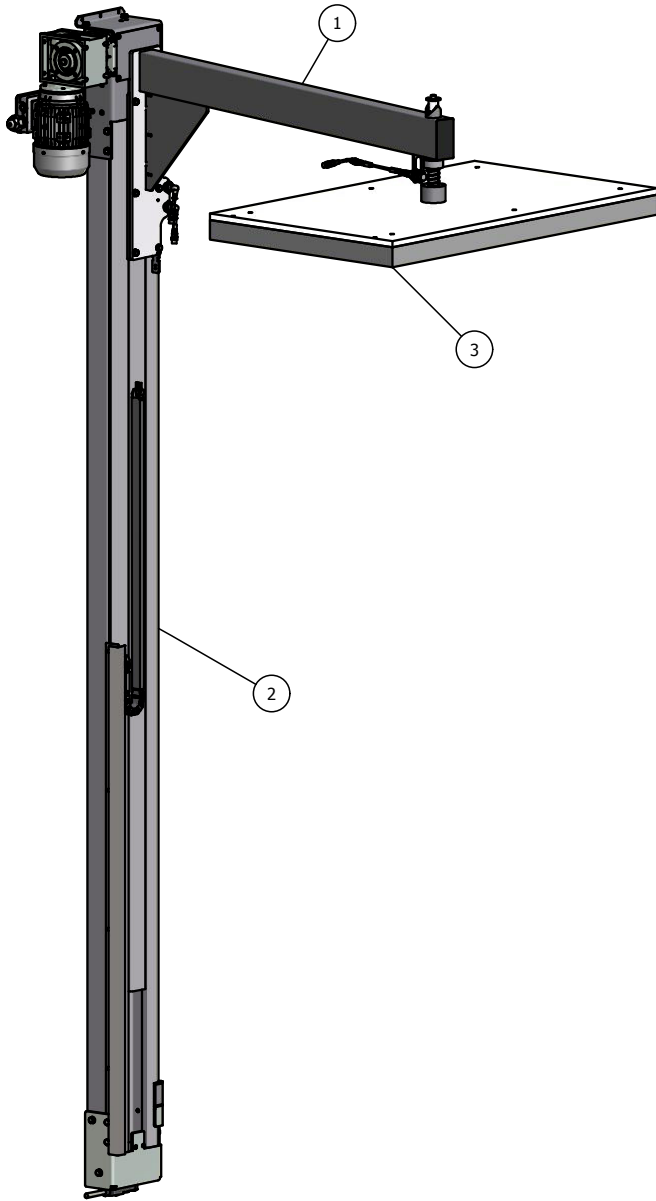
210372 - TOP PLATE RECTANGULAR CTT 205/210/215/230
210380 - TOP PLATE RECTANGULAR CTT 300

POS.	PART NO.	DESCRIPTION	Q.
1	210353	BEAM	1
2	210451	TOPPLATE MAST	1
3	220172	TOPP PLATE 600x1000	1

210373 - TOP PLATE ROUND CTT 205/210/215/230
210381 - TOP PLATE ROUND CTT 300

POS.	PART NO.	DESCRIPTION	Q.
1	210353	BEAM	1
2	210374	TOPPLATE Ø700mm	1
3	210451	TOPPLATE MAST LH=2200mm	1

TOP PLATE FOR MACHINE WITH: Load height 2600 mm, table Ø1650 mm

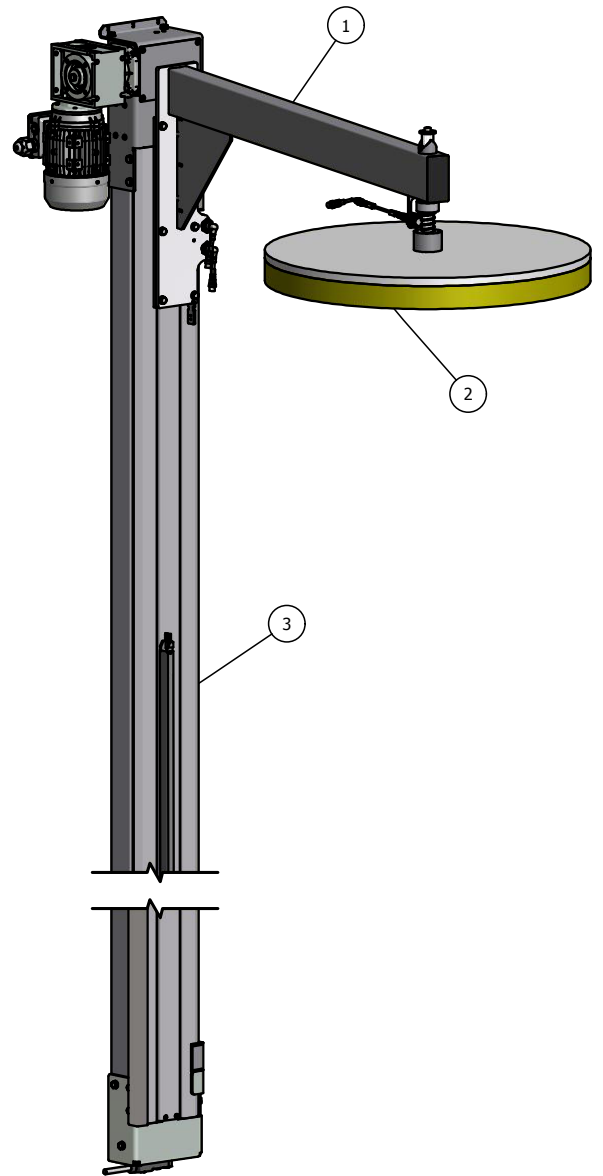
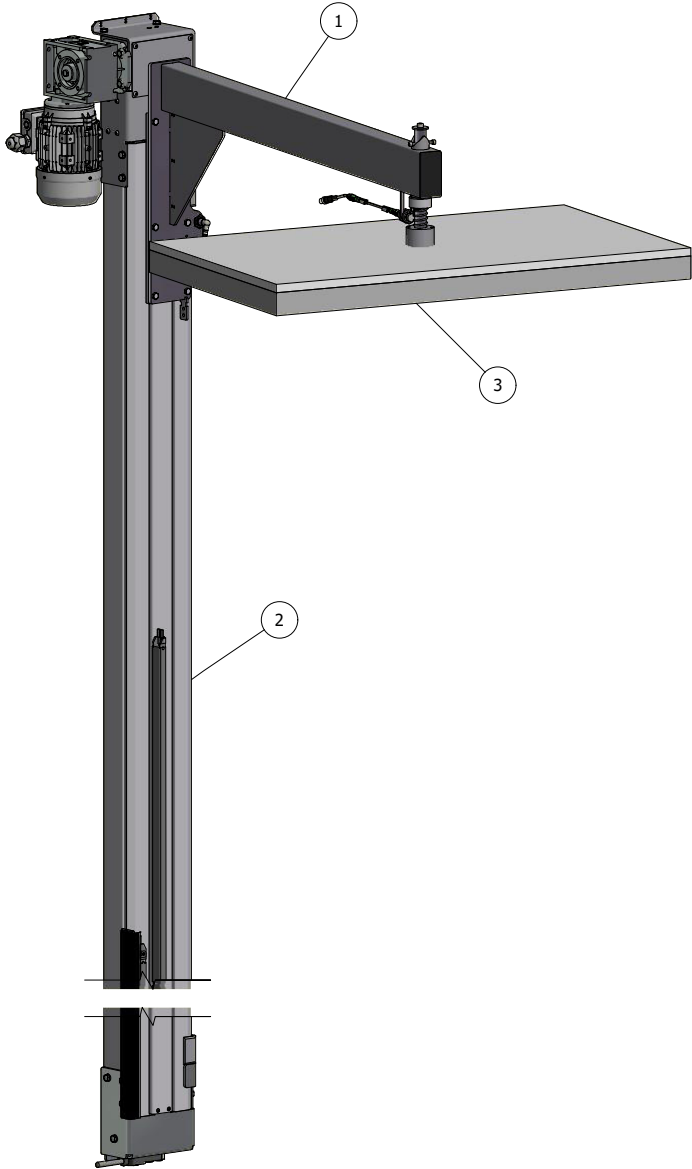


210518 - TOP PLATE RECTANGULAR CTT 205/210/215/230
210522- TOP PLATE RECTANGULAR CTT 300

POS.	PART NO.	DESCRIPTION	Q.
1	210353	BEAM	1
2	210452	TOPPLATE MAST	1
3	220172	TOPP PLATE 600x1000	1

210519 - TOP PLATE ROUND CTT 205/210/215/230
210523 - TOP PLATE ROUND CTT 300

POS.	PART NO.	DESCRIPTION	Q.
1	210353	BEAM Ø1650mm	1
2	210374	TOPPLATE Ø700mm	1
3	210452	TOPPLATE MAST LH=2600mm	1



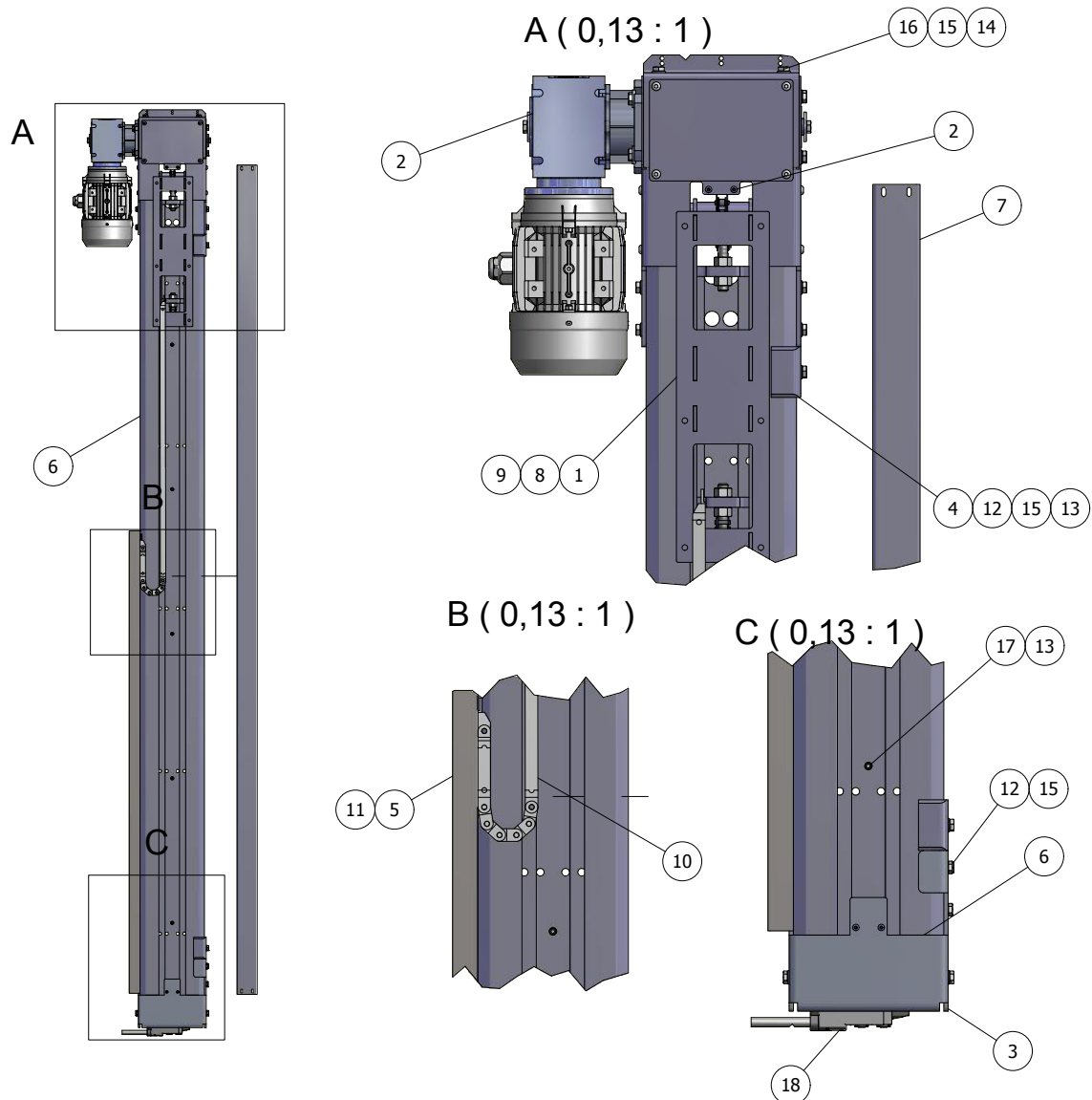
210395 - TOP PLATE RECTANGULAR CTT 205/210/215/230
210389- TOP PLATE RECTANGULAR CTT 300

210387 - TOP PLATE ROUND CTT 205/210/215/230
210390 - TOP PLATE ROUND CTT 300

POS.	PART NO.	DESCRIPTION	Q.
1	210353	BEAM Ø1650mm	1
2	210453	TOPPLATE MAST LH=3000mm	1
3	220172	TOPP PLATE 600x1000	1

POS.	PART NO.	DESCRIPTION	Q.
1	210353	BEAM	1
2	210374	TOPPLATE Ø700mm	1
3	210453	TOPPLATE MAST	1

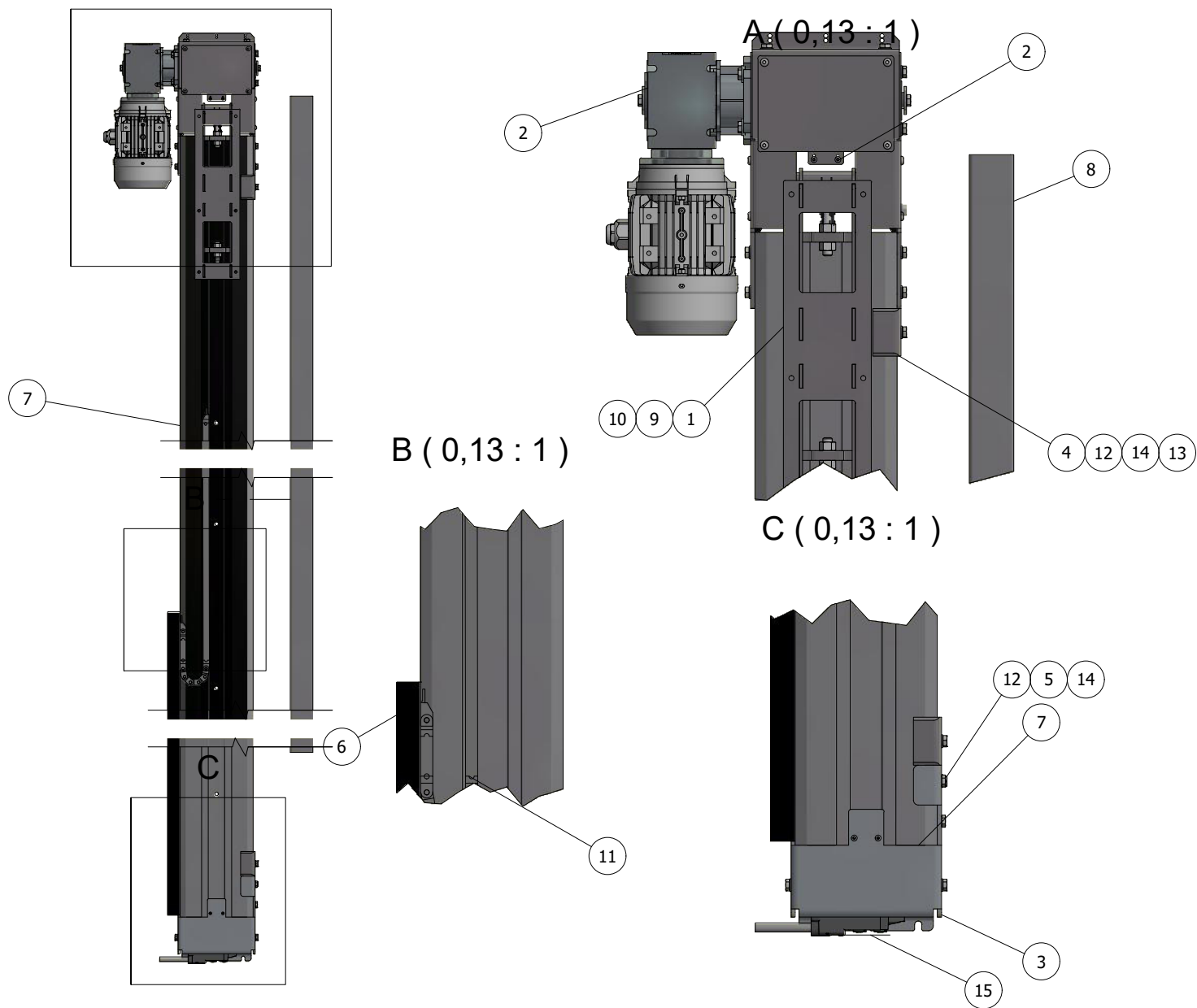
210451 - TOPPLATE MAST LH=2200mm



POS.	PART NO.	DESCRIPTION	Q.	NOTICE
1	200329	CARRIAGE ASSY.	1	
2	210333	UPPER TRANS.	1	
3	210340	LOWER TRANS.	1	
4	312206	LIMIT POSITION UNIT	2	
5	371142	CABLE CHANNEL	1	
6	371375	MAST PROFILE L=2200mm	1	
7	371376	COVER 2295mm	1	
8	400350	LOCKING LINK RS08B	2	
9	401068	ROLLER CHAIN RS 08B	1	
10	401640	CABLE CHAIN	1	
11	460016	SCREW M8x14	4	
12	460017	SCREW M6S M8x16	8	
13	460181	NUT M6M 8	20	
14	460191	LOCKINGNUT M8	2	
15	460201	WASHER BRB 8.4	10	
16	460214	M6S M8x25	2	
17	460259	STOP SCREW MSK6SS M8x20	5	
18	901672	SPLIT BOX	1	

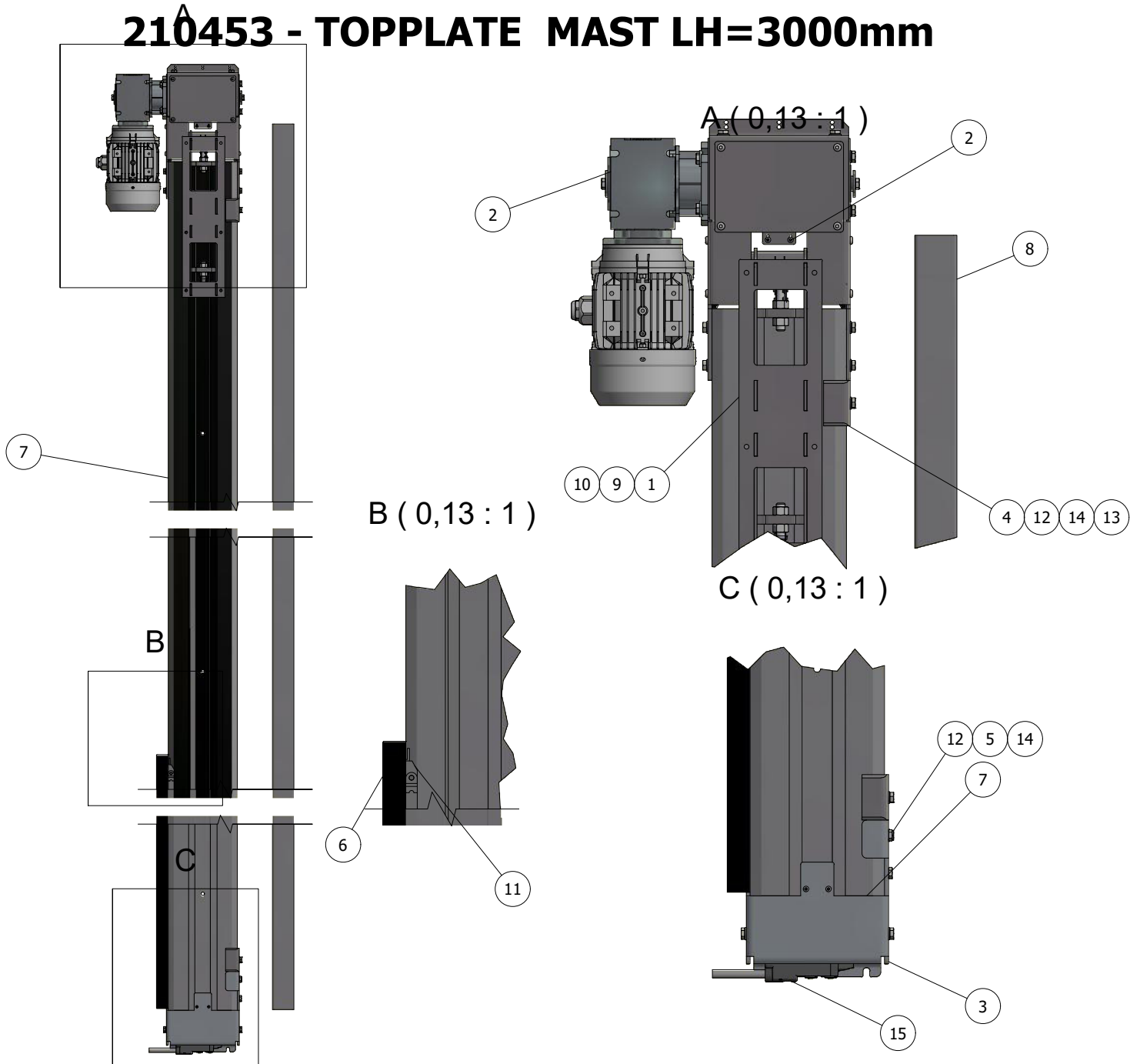
210452 - TOPPLATE MAST LH=2600mm

A



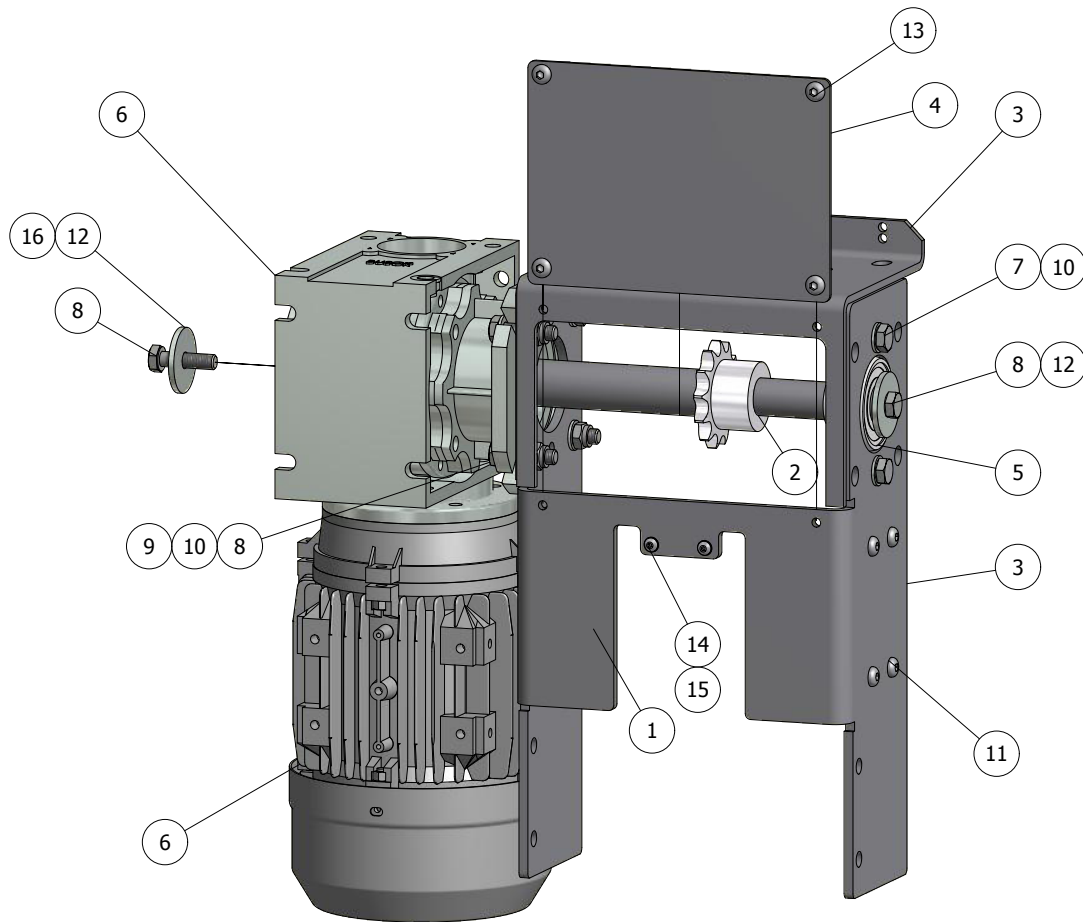
POS.	PART NO.	DESCRIPTION	Q.	NOTICE
1	200329	CARRIAGE ASSY.	1	
2	210333	UPPER TRANS.	1	
3	210340	LOWER TRANS.	1	
4	312206	LIMIT POSITION UNIT	2	
5	320972	BAR NUT cc50	4	
6	371142	CABLE CHANNEL	1	
7	371377	MAST PROFILE L=2600	1	
8	371378	COVER 2695mm	1	
9	400350	LOCKING LINK RS08B	2	
10	401069	ROLLER CHAIN RS 08B	1	
11	401640	CABLE CHAIN	1	
12	460017	SCREW M6S M8x16	10	
13	460181	NUT M6M 8	2	
14	460201	WASHER BRB 8.4	10	
15	901672	SPLIT BOX	1	

210453 - TOPPLATE MAST LH=3000mm



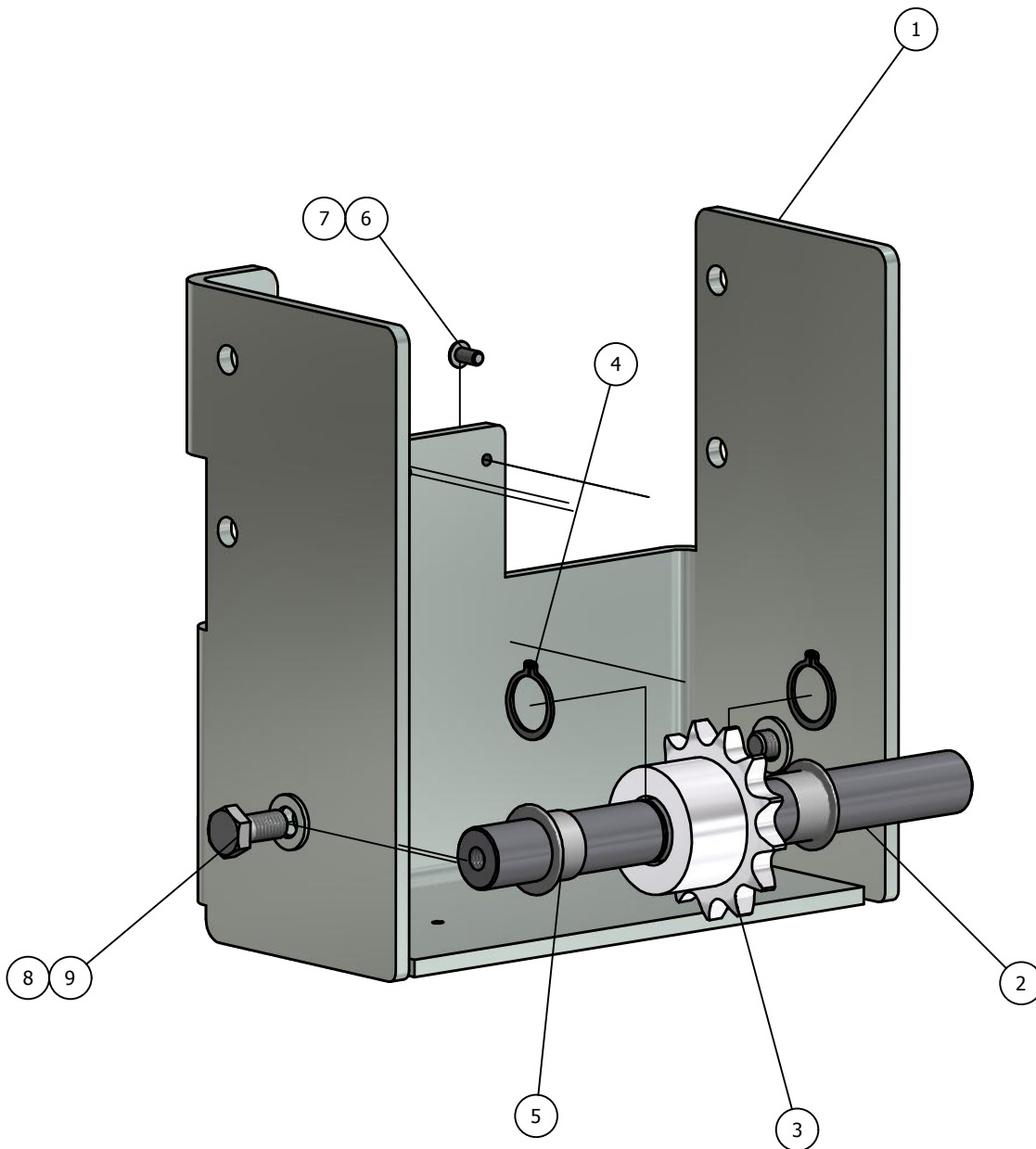
POS.	PART NO.	DESCRIPTION	Q.	NOTICE
1	200329	CARRIAGE ASSY.	1	
2	210333	UPPER TRANS.	1	
3	210340	LOWER TRANS.	1	
4	312206	LIMIT POSITION UNIT	2	
5	320972	BAR NUT cc50	4	
6	371142	CABLE CHANNEL	1	
7	371379	MAST PROFILE L=3000mm	1	
8	371380	COVER 3095mm	1	
9	400350	LOCKING LINK RS08B	2	
10	401070	ROLLER CHAIN RS 08B	1	
11	401640	CABLE CHAIN	1	
12	460017	SCREW M6S M8x16	10	
13	460181	NUT M6M 8	2	
14	460201	WASHER BRB 8.4	10	
15	901672	SPLIT BOX	1	

210333 - UPPER TRANS.



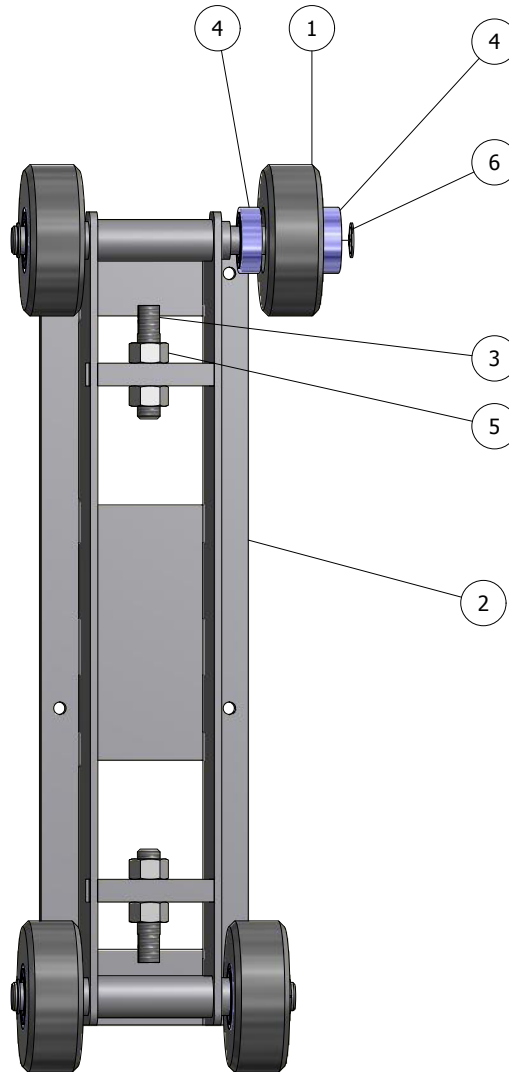
POS.	PART NO.	DESCRIPTION	Q.	NOTICE
1	370825	GUIDE PLATE	2	
2	370896	UPPER SHAFT TOPPLATE	1	
3	370949	TOPP TOPPLATE	1	
4	370957	COVER FOR TOPP	1	
5	400328	FLANGE BEARING SLFL 20	1	
6	401001	CARRIAGE MOTOR ASSY	1	
7	460018	SCREW M6S M8x20	2	
8	460019	SCREW M6S 8x30	6	
9	460191	LOCKING NUT M8	7	
10	460201	WASHER BRB 8.4	11	
11	460211	K6S M6x16	8	
12	460540	WASHER SRKB9x35x3	2	
13	460563	SCREW K6S M6x8	4	
14	460564	SCREW KS6 M4x8	2	
15	460589	WASHER BRB 4,3	2	
16	460718	SHAFT KEY	1	

210340 - LOWER TRANS.



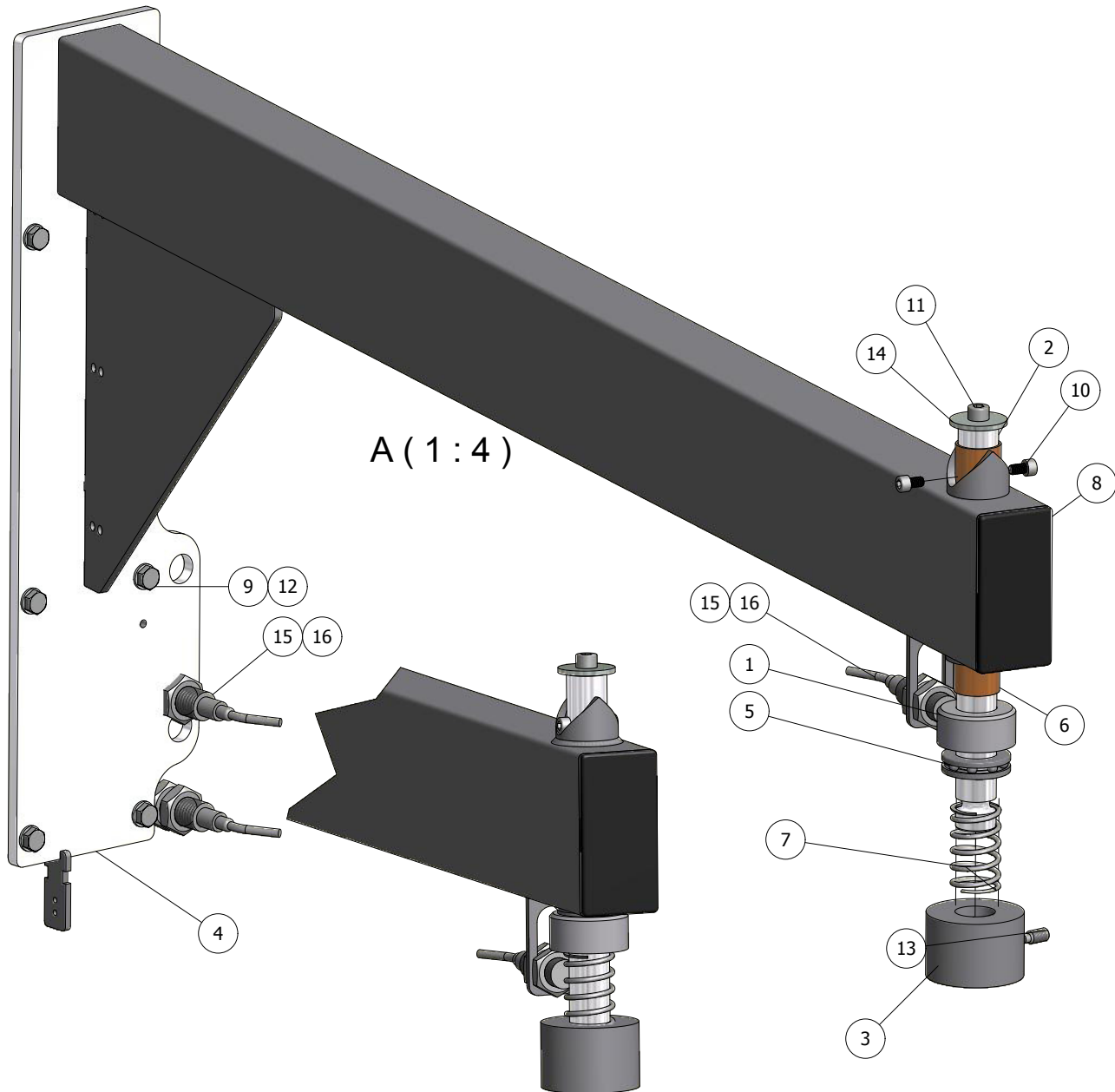
POS.	PART NO.	DESCRIPTION	Q.	NOTICE
1	370876	BOTTOM HOOD	1	
2	370878	SHAFT	1	
3	370958	SPROCKET	1	
4	460417	SGA 17	2	
5	401641	BEARING	2	
6	460564	SCREW KS6 M4x8	2	
7	460589	WASHER BRB 4,3	2	
8	460201	WASHER BRB 8.4	2	
9	460017	SCREW M6S M8x16	2	

200329 - CARRIAGE ASSY.



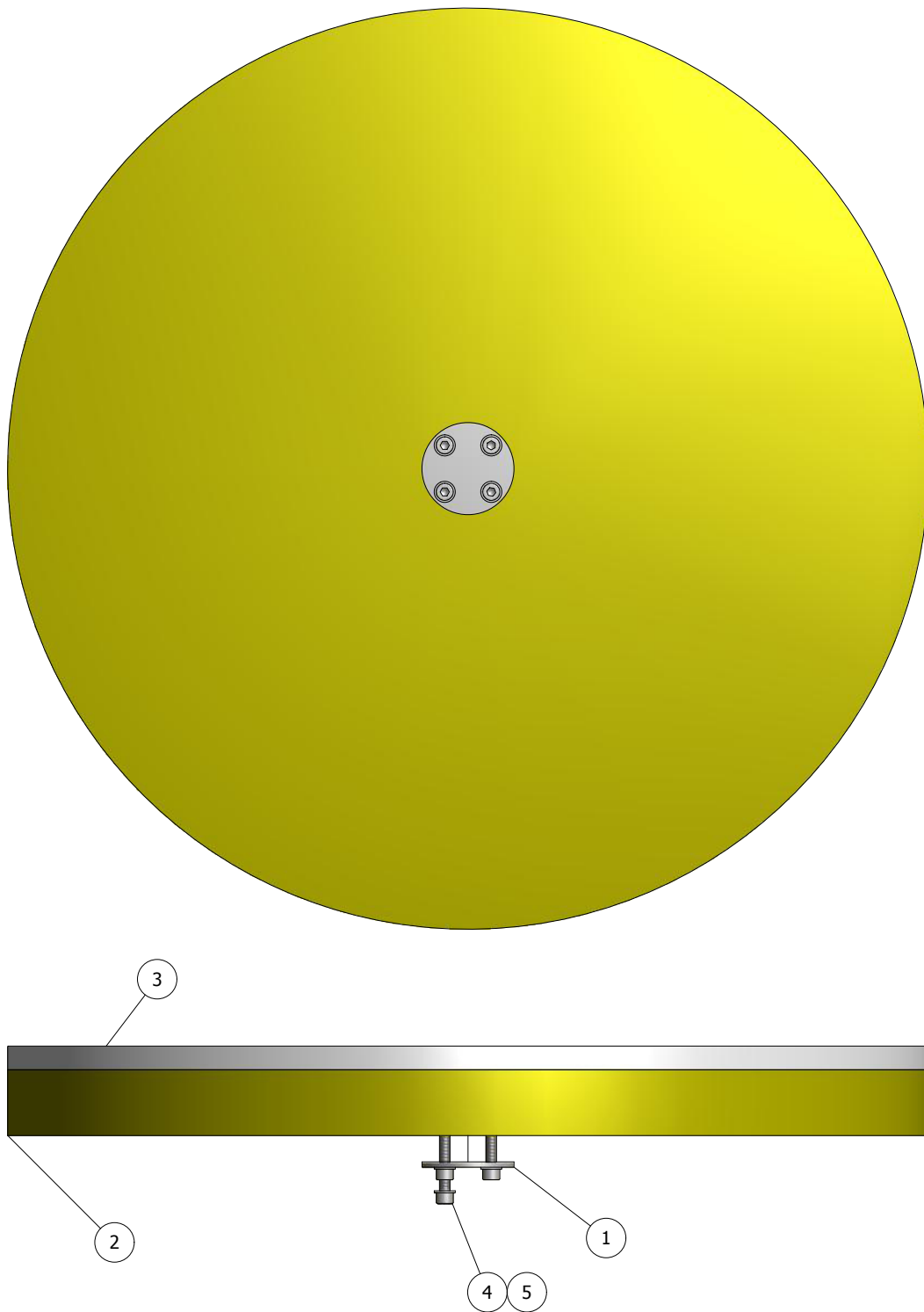
POS.	PART NO.	DESCRIPTION	Q.	NOTICE
1	301420	WHEEL	4	
2	312205	FRAME	1	
3	312213	REFRACTION SCREW	2	
4	400312	BEARING 6202	8	
5	460196	NUT M12	4	
6	460415	RETANING RING	4	

210353 - BEAM



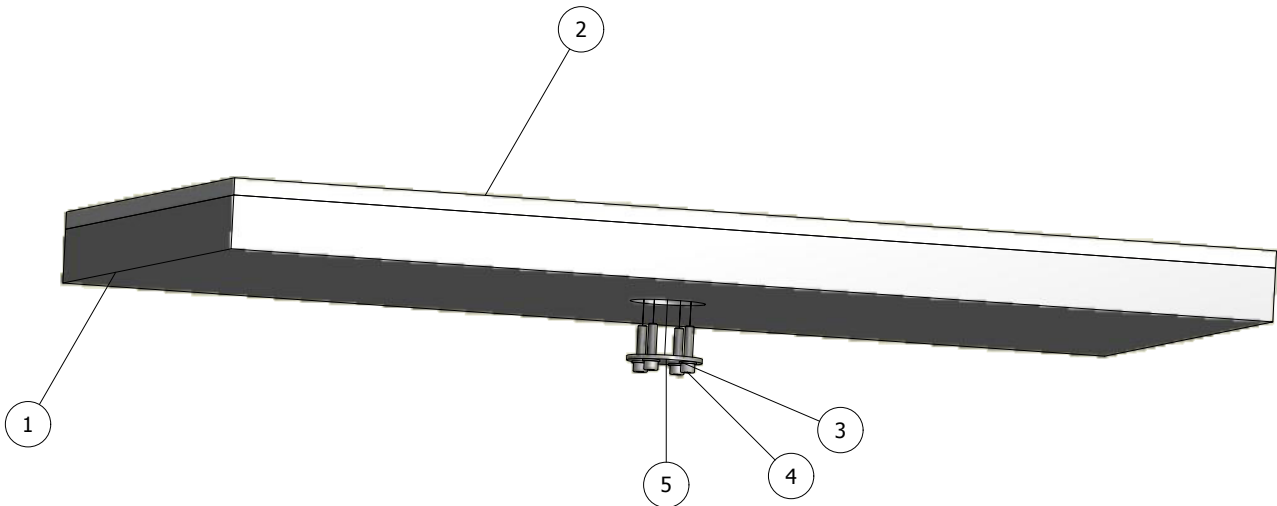
POS.	PART NO.	DESCRIPTION	Q.	NOTICE
1	310058	BEARING COVER	1	
2	371172	SHAFT FOR PLATE	1	
3	370901	CONNECTION	1	
4	371028	BEAM FOR TOPPLATE	1	
5	400170	AXIS BEARING	1	
6	400360	GLIDE BEARING	2	
7	400508	SPRING SF-TF 3x25x50	1	
8	401642	END PLUG 100x50	1	
9	460017	SCREW M6S M8x16	6	
10	460093	SCREW MC6S M6x10	2	
11	460107	SCREW MC6S M8x12	1	
12	460201	WASHER BRB 8.4	6	
13	460273	STOP SCREW T6SS M8x20	2	
14	460540	WASHER SRKB9x35x3	1	
15	900676	SENSOR	3	
16	900677	CABLE M12 5m	3	

210374 - TOPPLATE Ø700mm



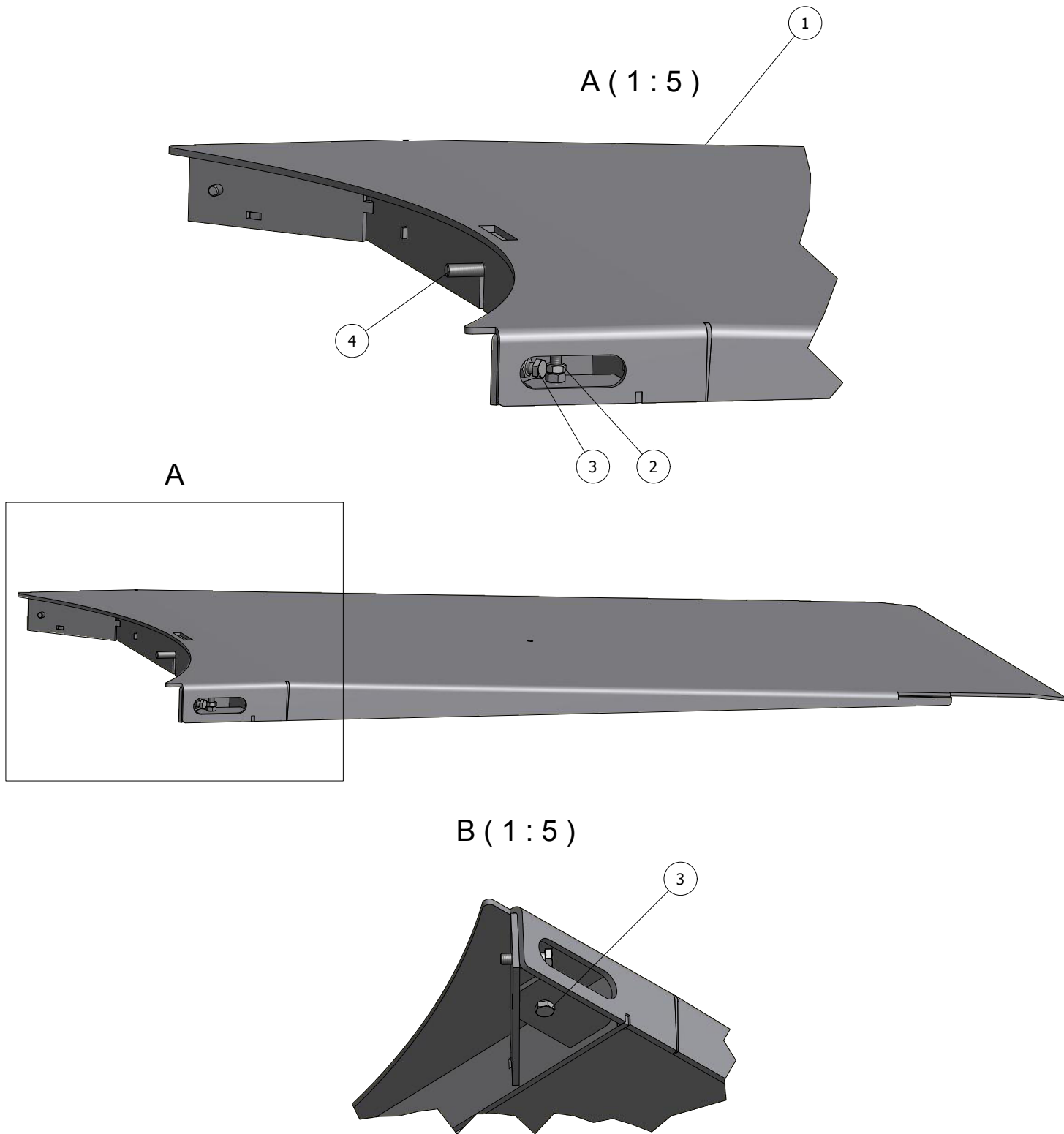
POS.	PART NO.	DESCRIPTION	Q.	NOTICE
1	312301	CARDAN JOINT WASHER	1	
2	312339	FOAM PASTIC TOPPLATE Ø700	1	
3	360092	TOPPLATE d=700mm	1	
4	460113	SCREW MC6S M8x35	4	
5	460201	WASHER BRB 8.4	4	

220172 - TOPP PLATE 600x1000



POS.	PART NO.	DESCRIPTION	Q.	NOTICE
1	312340	FOAMRUBBER	1	
2	320957	PLYFA PLATE	1	
3	460201	BRB 8.4	4	
4	460113	SCREW MC6S M8x35	4	
5	312301	CARDAN JOINT WASHER	1	

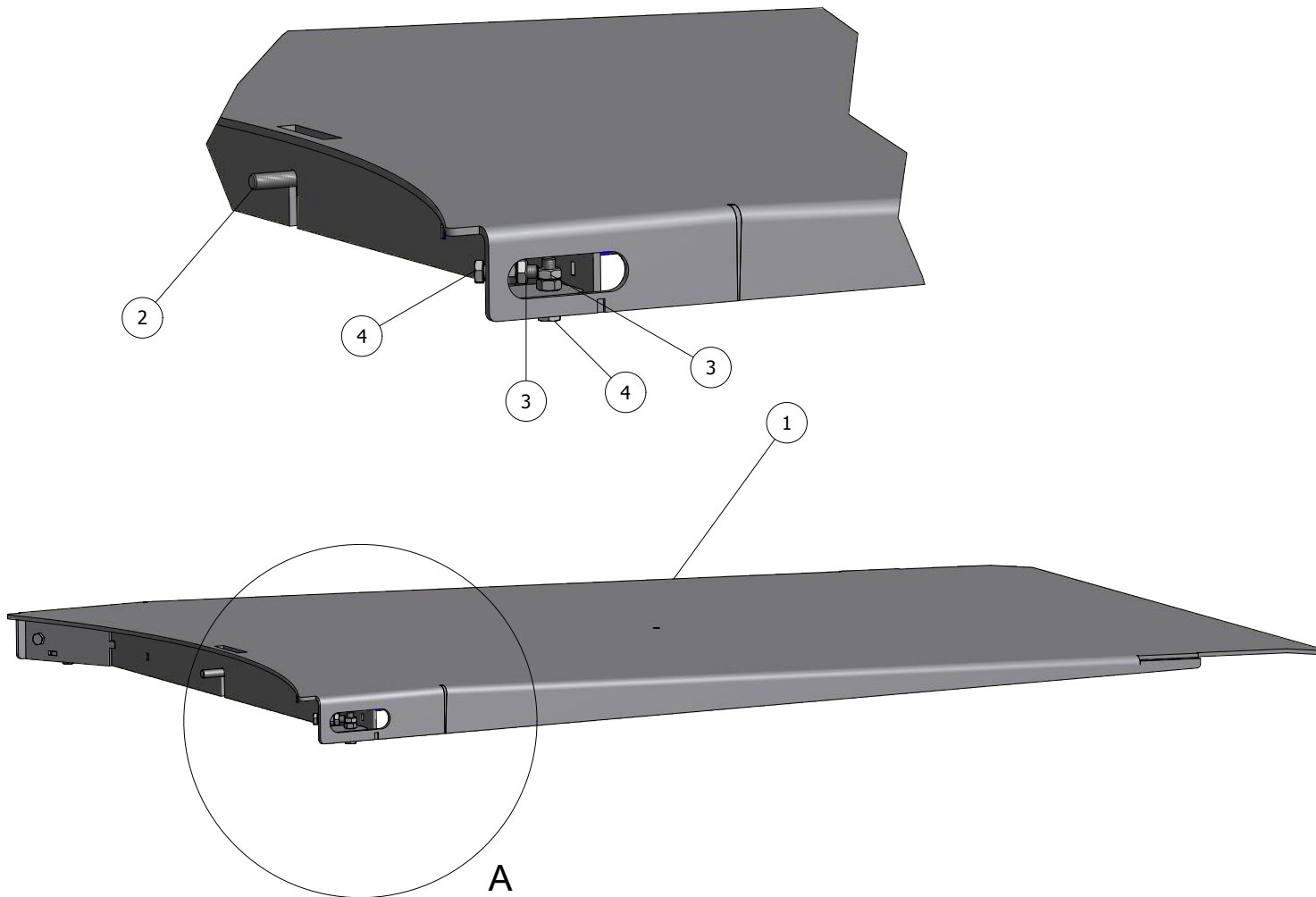
210375 - RAMP 1650mm



POS.	PART NO.	DESCRIPTION	Q.	NOTICE
1	371053	RAMP 1650mm STANDRAD	1	
2	460183	NUT M6M 10	4	
3	460529	M6S M10x40	4	
4	460041	M6S M12x40	1	

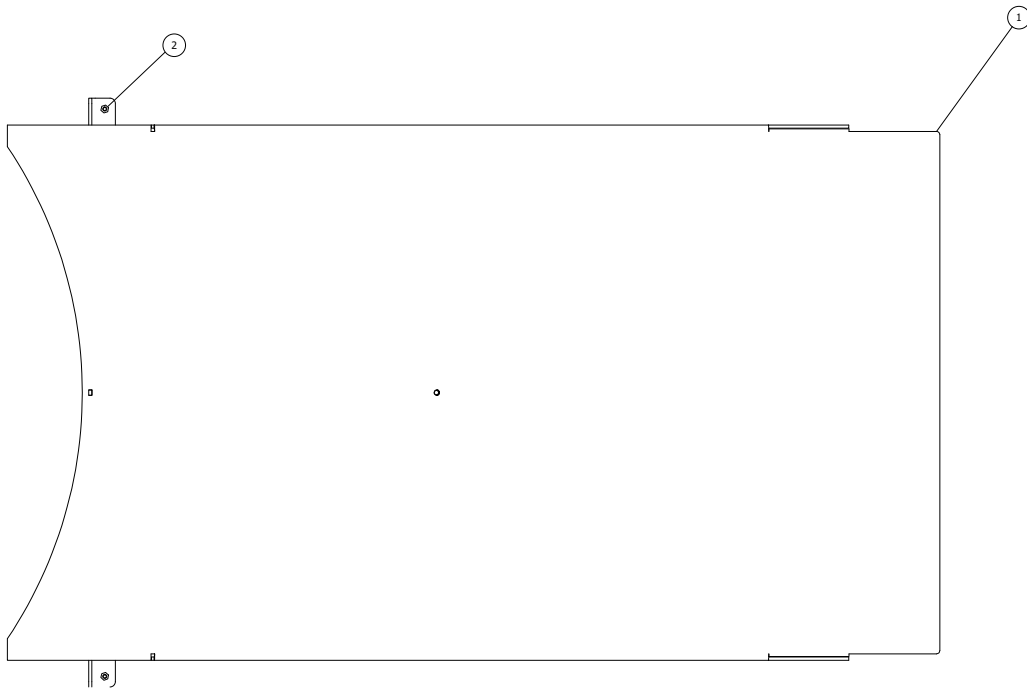
210377 - RAMP 2200

A (1:5)



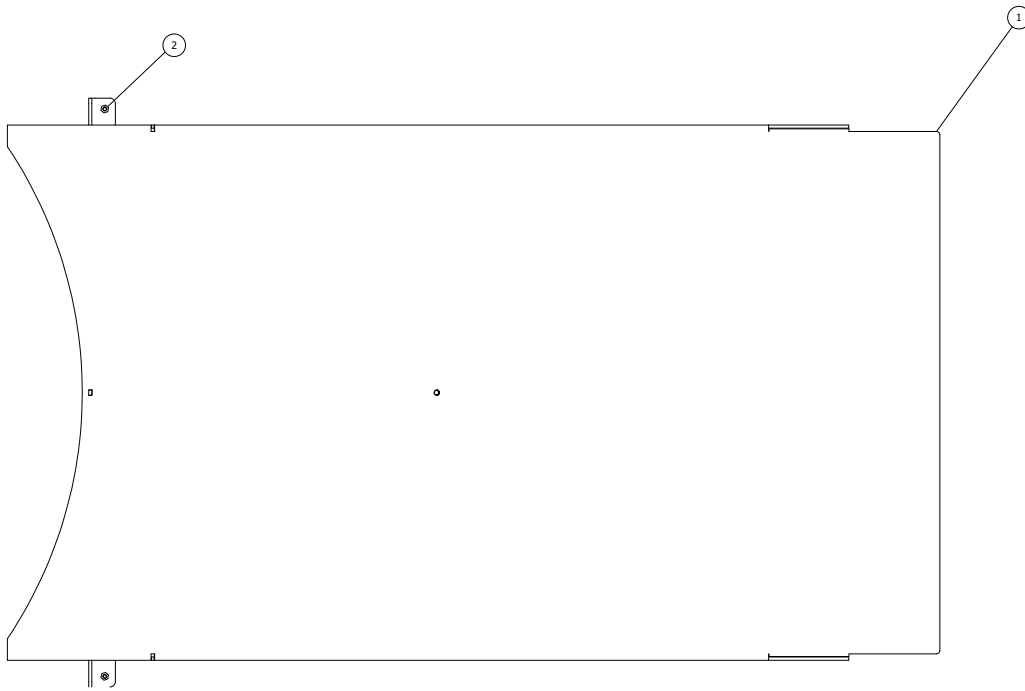
POS.	PART NO.	DESCRIPTION	Q.	NOTICE
1	371149	RAMP 2200mm STANDRAD	1	
2	460041	M6S M12x40	1	
3	460183	NUT M6M 10	4	
4	460529	M6S M10x40	4	

210528 -RAMP FOR SCALE, Ø1650 mm



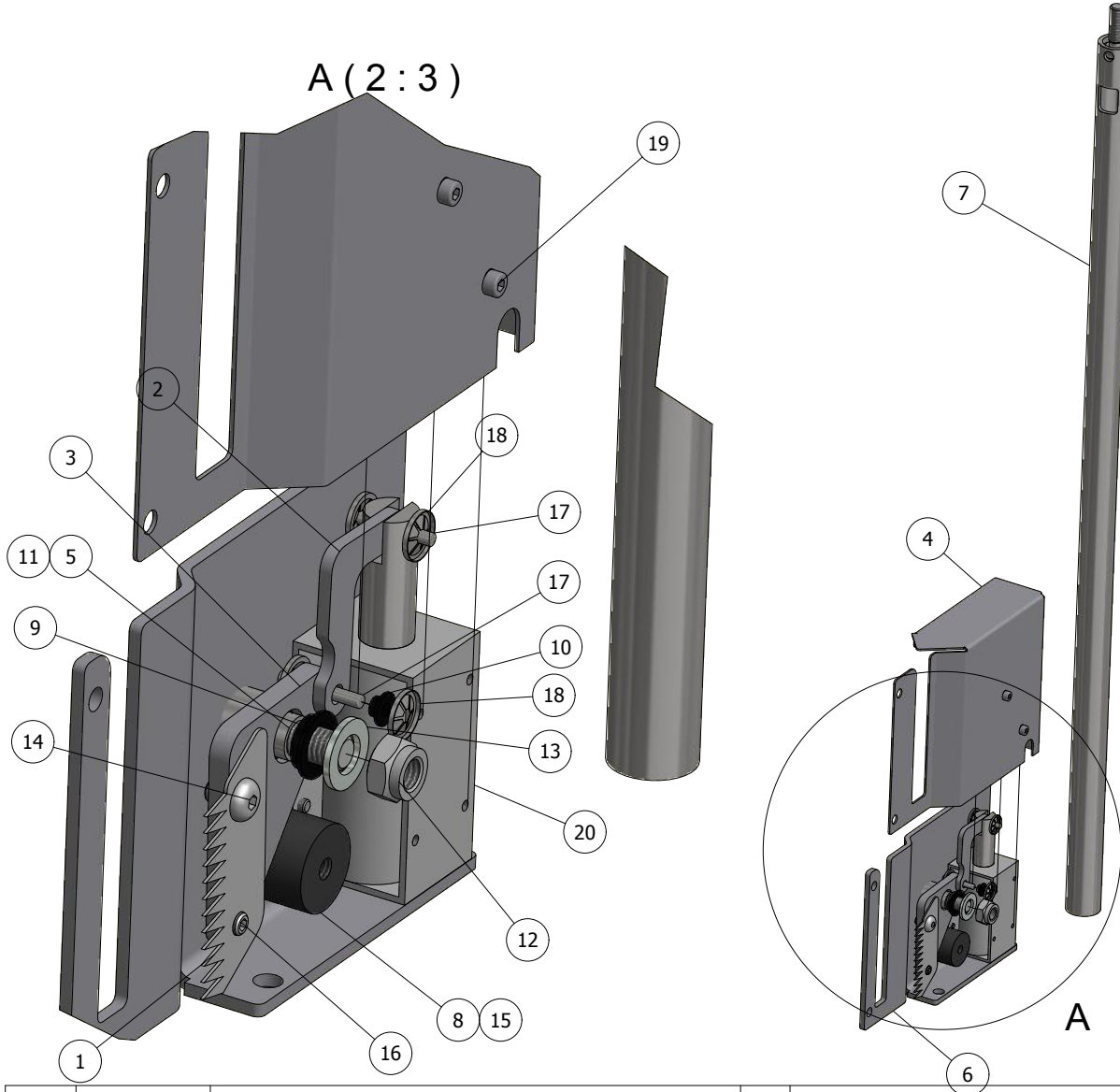
POS.	PART NO.	DESCRIPTION	Q.	NOTICE
1	371967	RAMP 1650mm SCALE	1	
2	460763	THROUGHBOLT M8x100	2	

210579 -RAMP FOR SCALE, Ø2200 mm



POS.	PART NO.	DESCRIPTION	Q.	NOTICE
1	372676	RAMP 2200mm SCALE	1	
2	460763	THROUGHBOLT M8x100	2	

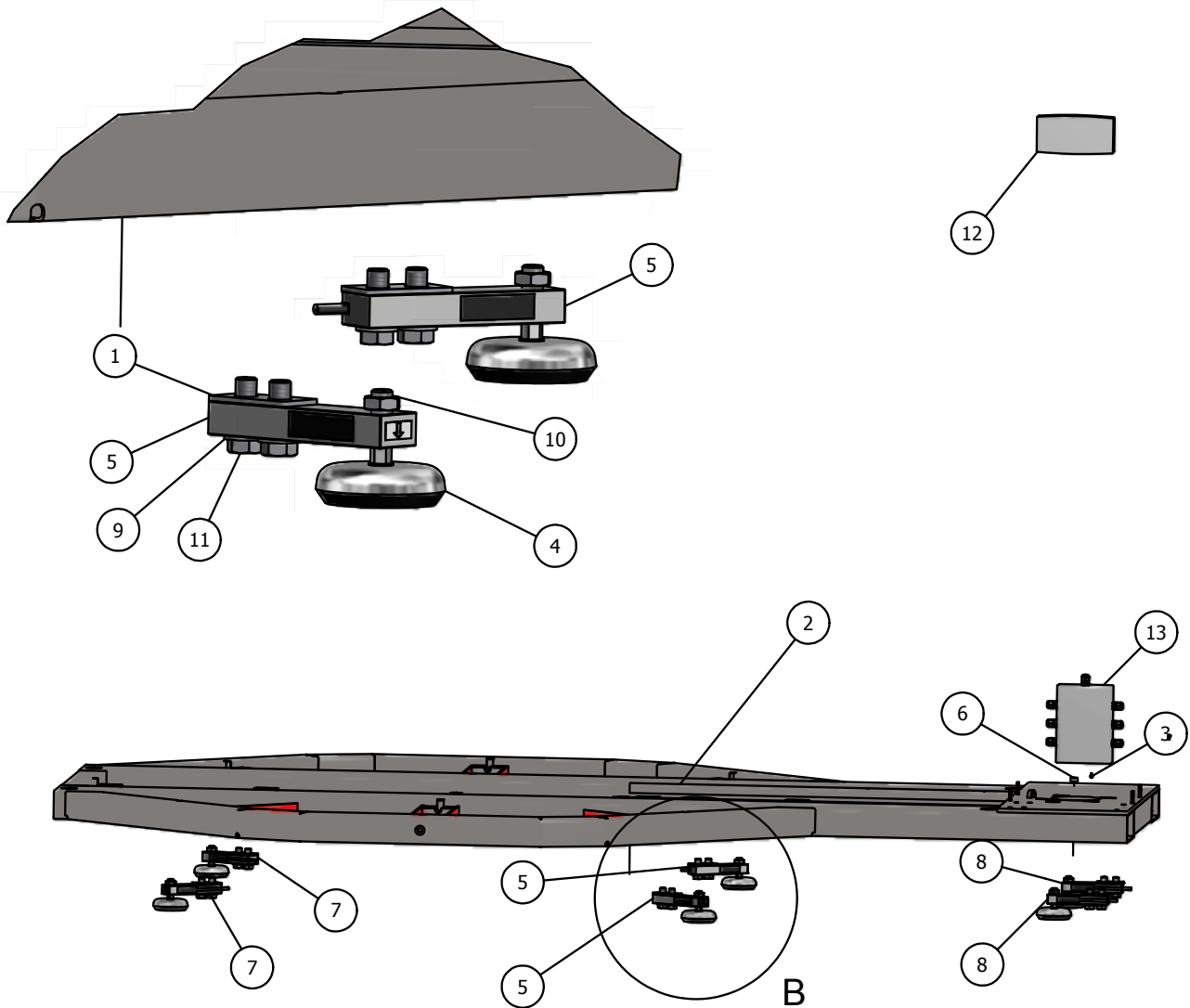
210383 - CUTTING DEVICE SEMI AUTOMATIC



POS.	PART NO.	DESCRIPTION	Q.	NOTICE
1	321337	KNIFE BLADE	1	
2	371209	FINGER	1	
3	371210	KNIFE CARRIER	1	
4	371211	COVER	1	
5	371214	DISTANCE	1	
6	371215	BRACKET	1	
7	371226	CABLE DUCT	1	
8	400576	DAMPENER	1	
9	401650	BEARING	2	
10	401651	BEARING	3	
11	460019	SCREW M6S 8x30	1	
12	460191	LOCKING NUT M8	1	
13	460201	WASHER BRB 8.4	1	
14	460561	SCREW K6S M5x8	1	
15	460563	SCREW K6S M6x8	1	
16	460664	STOPSCREW MSK6SS 5x10	1	
17	460803	PIN CP 3x20	2	
18	460804	LOCKING WASHER	4	
19	460805	MC6S M3X6	6	
20	901720	SOLENOID	1	

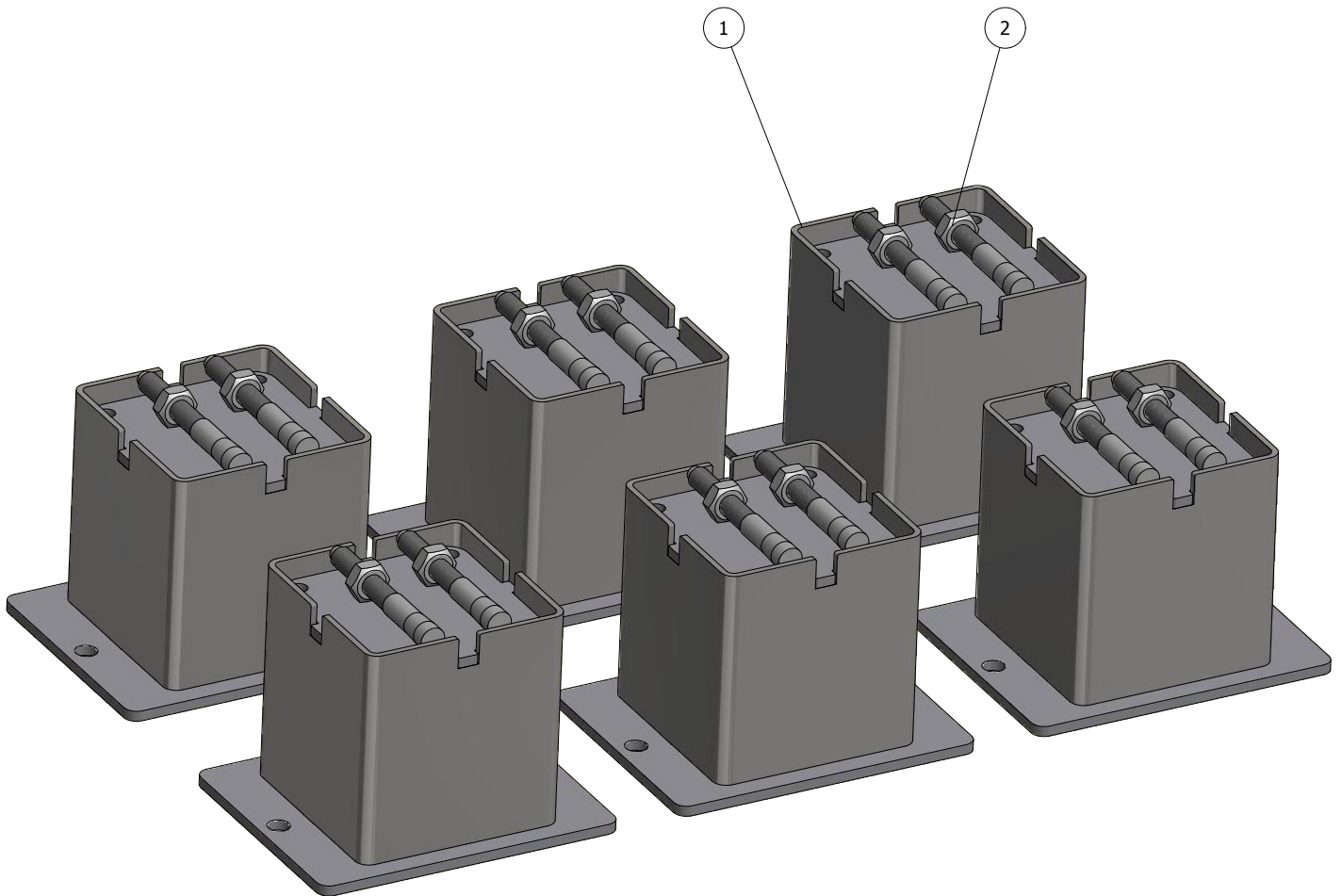
210405 - SCALE KIT

B (1 : 4)



POS.	PART NO.	DESCRIPTION	Q.	NOTICE
1	360062	DISTANCE FOR SCALE UNIT	6	
2	371108	SCALE KIT MEK. FOR 370935	1	
3	400720	STRAP	4	
4	400870	FOOT FOR LOAD CELL	6	
5	401606	LOAD CELL1000 Kg (3m)	2	
6	401607	SPIRIT LEVEL	1	
7	401611	LOAD CELL1000 Kg (4m)	2	
8	401654	LOAD CELL1000 Kg (2m)	2	
9	460203	WASHER BRB. 13	12	
10	460692	NUT	6	
11	460724	SCREW M6S M12x35	12	
12	901506	STATHMOS 3070	1	
13	901507	SUMMING BOX	1	

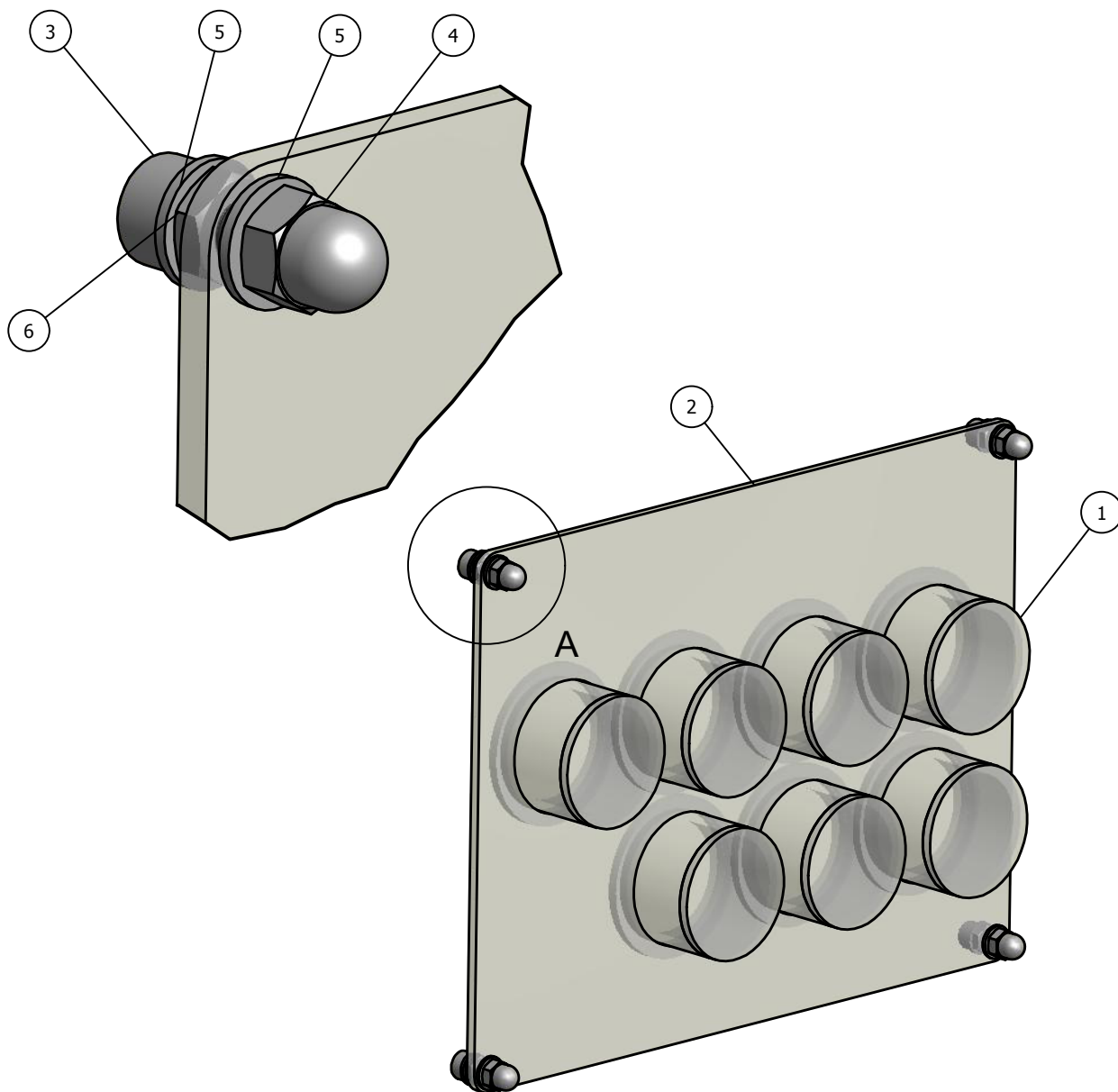
210413 - ELEVATION FEET FOR SCALE



POS.	PART NO.	DESCRIPTION	Q.	NOTICE
1	371188	EXT. FOOT SCALE WEIGHT	6	
2	460762	ANCHOR BOLT M10x90	12	

210421 - BUTTON COVER CTT

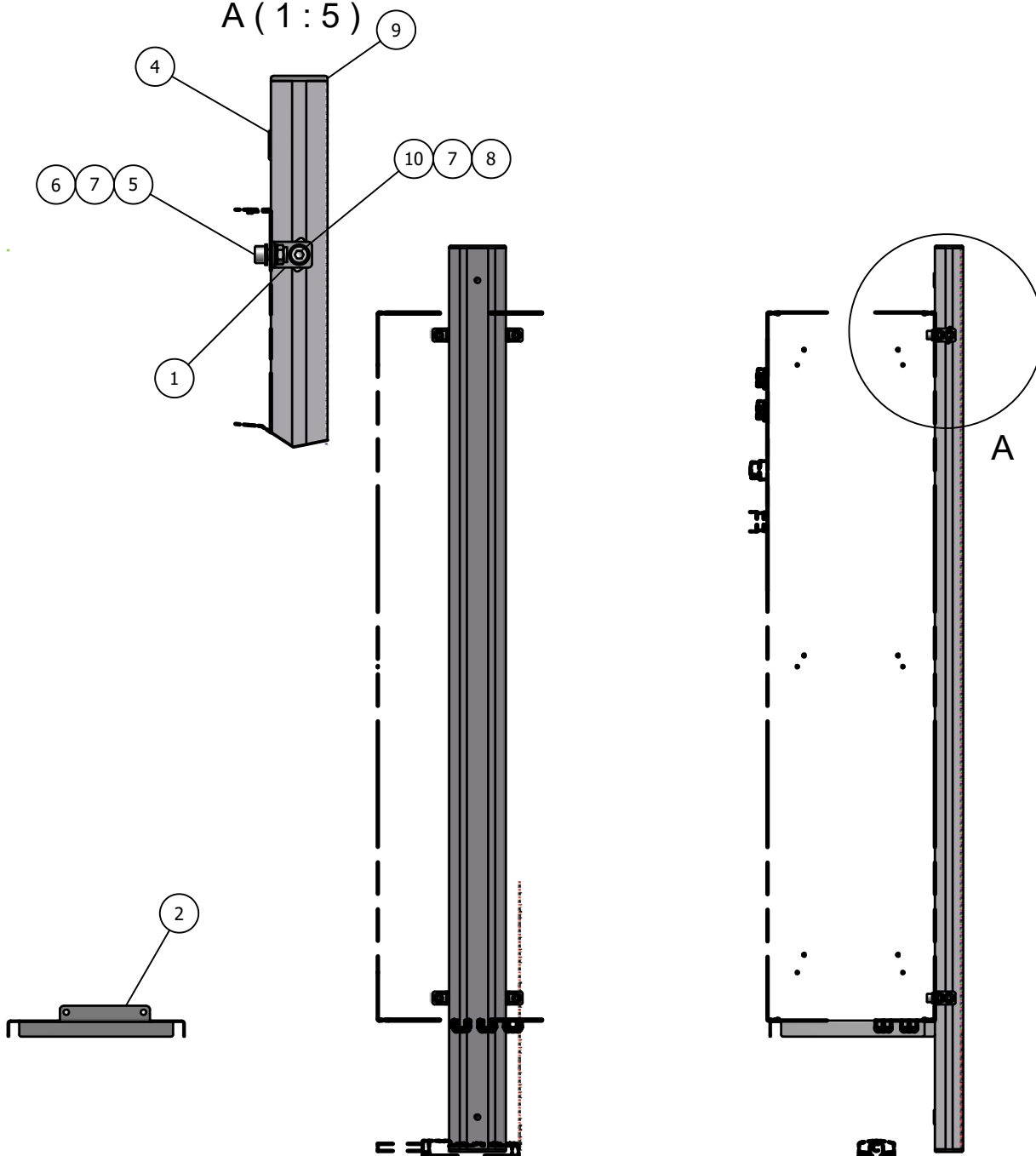
A (2 : 1)



POS.	PART NO.	DESCRIPTION	Q.	NOTICE
1	371227	CAP	7	
2	371228	HOLDER	1	
3	460080	SCREW MC6S 5x12	4	
4	460198	DOME NUT	4	
5	460199	WASHER BRB 5.3	8	
6	460513	NUT M5	4	

210431 - WALL MOUNTED CABINET

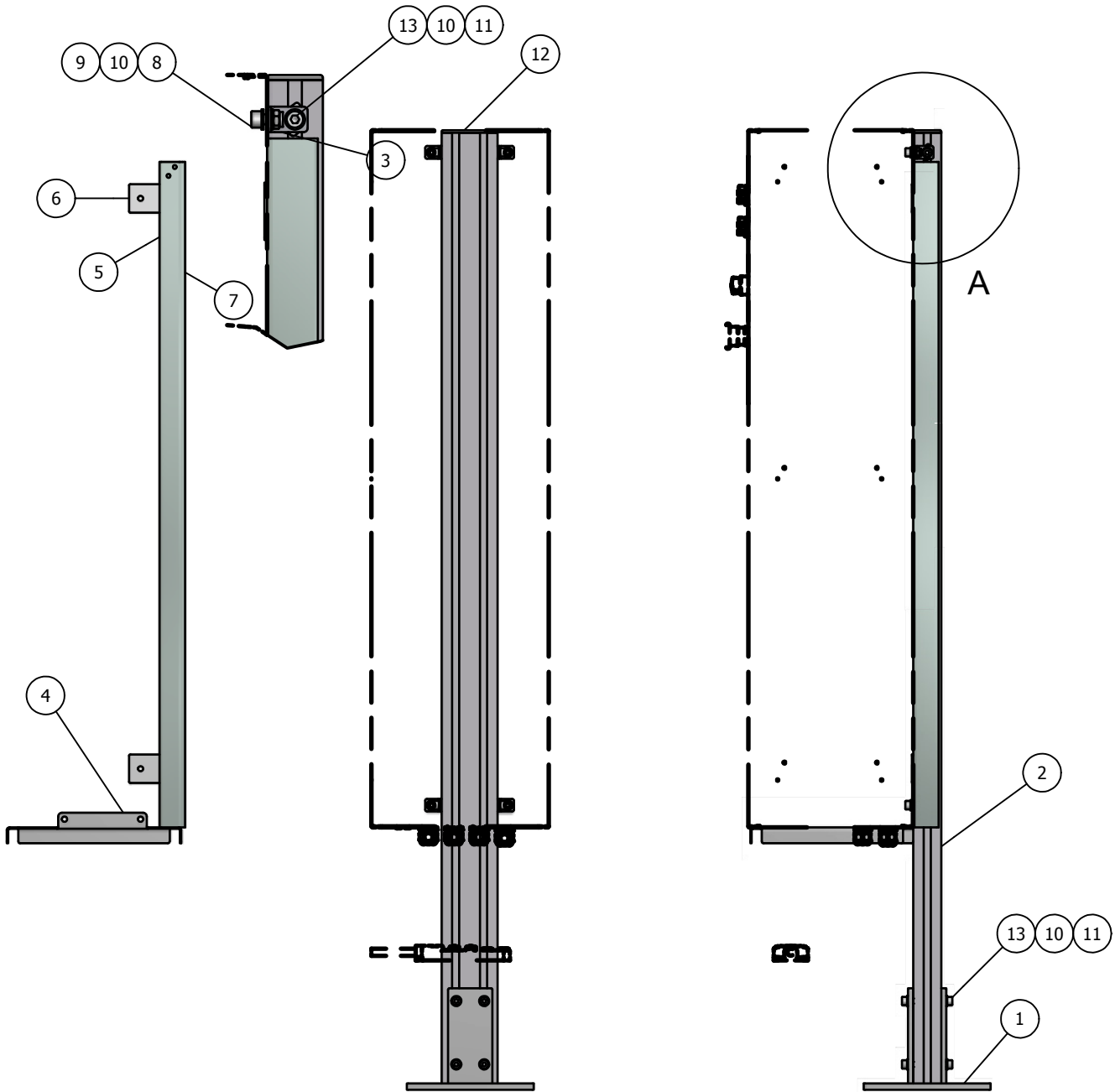
A (1:5)



POS.	PART NO.	DESCRIPTION	Q.	NOTICE
1	371243	CABINET BRACKET	4	
2	371245	TOPP COVER	1	POSITIONED ON THE MACHINE
3	371247	WALL RAIL	1	
4	400872	COVERPLUG	2	
5	460108	SCREW MC6S M8x16	4	
6	460191	LOCKING NUT M8	4	
7	460201	WASHER BRB 8.4	12	
8	460221	SQUARE NUT	4	
9	460224	ENDCAP 44x88	2	
10	460602	SCREW MC6S M8x14	4	

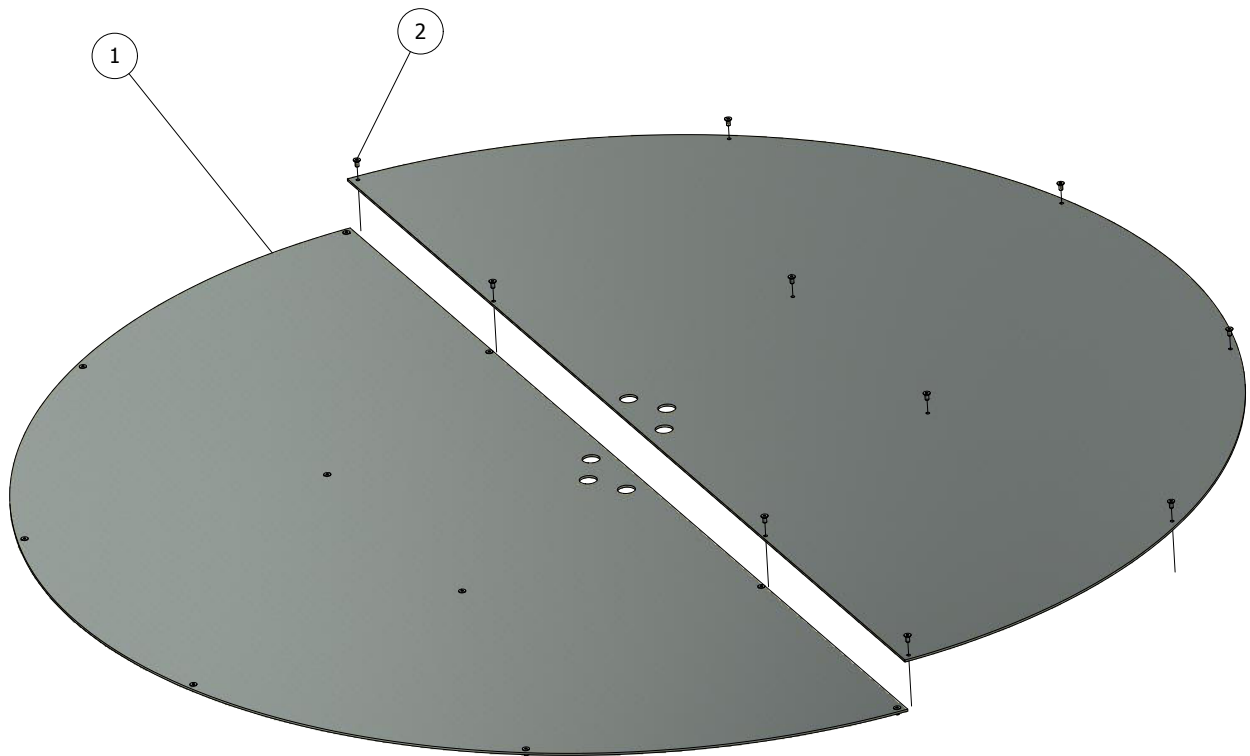
210432 - STAND ALONE CABINET

A (1 : 5)



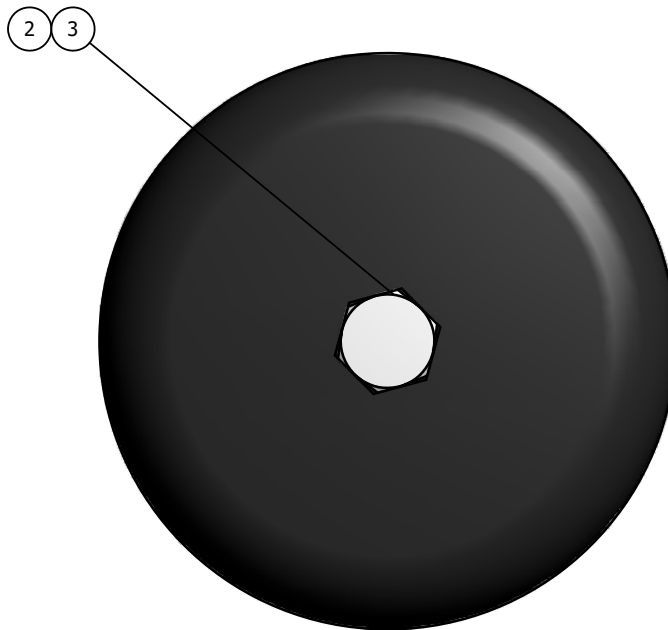
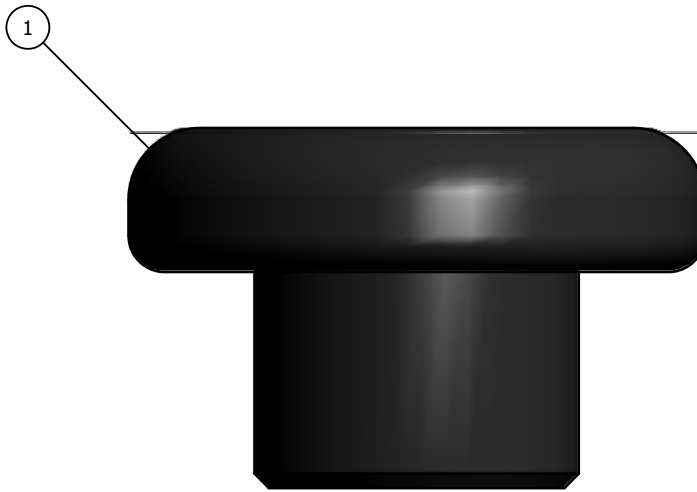
POS.	PART NO.	DESCRIPTION	Q.	NOTICE
1	320750	FOOT FOR 88x44	1	
2	321186	POLE FOR ELECTRIC-CABINET	1	
3	371243	CABINET BRACKET	4	
4	371245	TOPP COVER	1	POSITIONED ON THE MACHINE
5	371259	CABLE CHANNEL	1	POSITIONED ON THE MACHINE
6	371260	BRACKET	2	POSITIONED ON THE MACHINE
7	430132_1,0	CABLE CHANNEL COVER	1	POSITIONED ON THE MACHINE
8	460108	SCREW MC6S M8x16	4	
9	460191	LOCKING NUT M8	4	
10	460201	WASHER BRB 8.4	20	
11	460221	SQUARE NUT	12	
12	460224	ENDCAP 44x88	1	
13	460602	SCREW MC6S M8x14	12	

210426 - TURNTABLE KIT ROUGH SURFACE



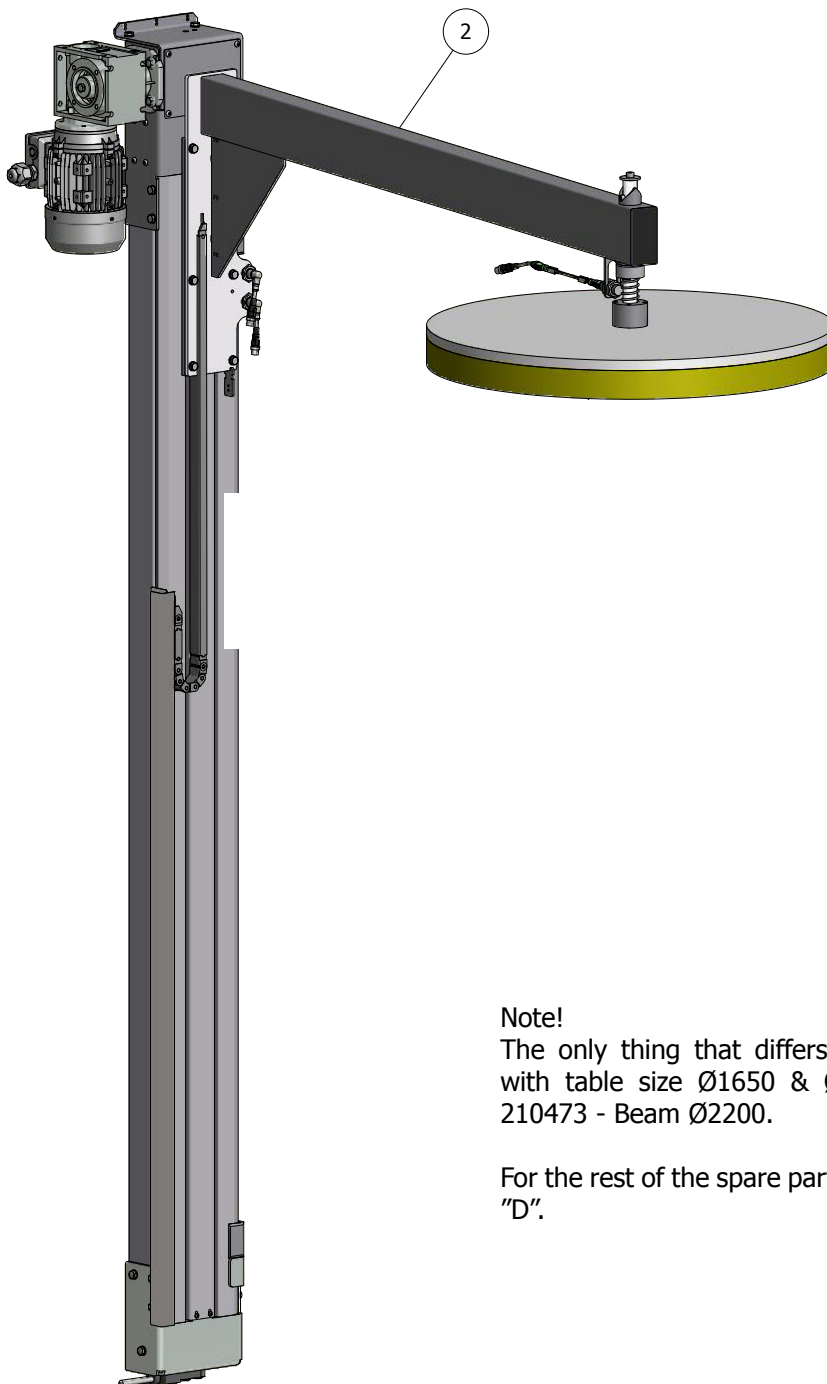
POS.	PART NO.	DESCRIPTION	Q.	NOTICE
1	371230	FIVE BAR TABLE Ø1640	2	
2	460159	SCREW MF6S 5x10	20	

210254 - FILM HOLDER COMPLETE



POS.	PART NO.	DESCRIPTION	Q.	NOTICE
1	312437	HOLDER FOR FILM	1	
2	400871	Spring SS1771-04	1	
3	460021	SCREW M6S 8x40	1	

210397 - TOPPLATE Ø700 CTT2x5 Ø 2200



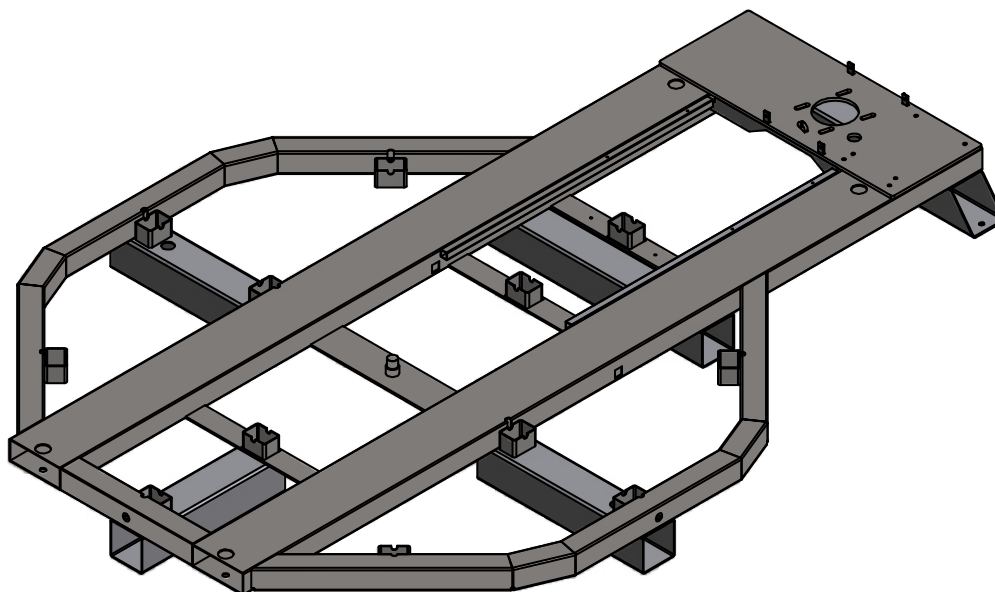
Note!

The only thing that differs between machines with table size Ø1650 & Ø2200 is position 2.
210473 - Beam Ø2200.

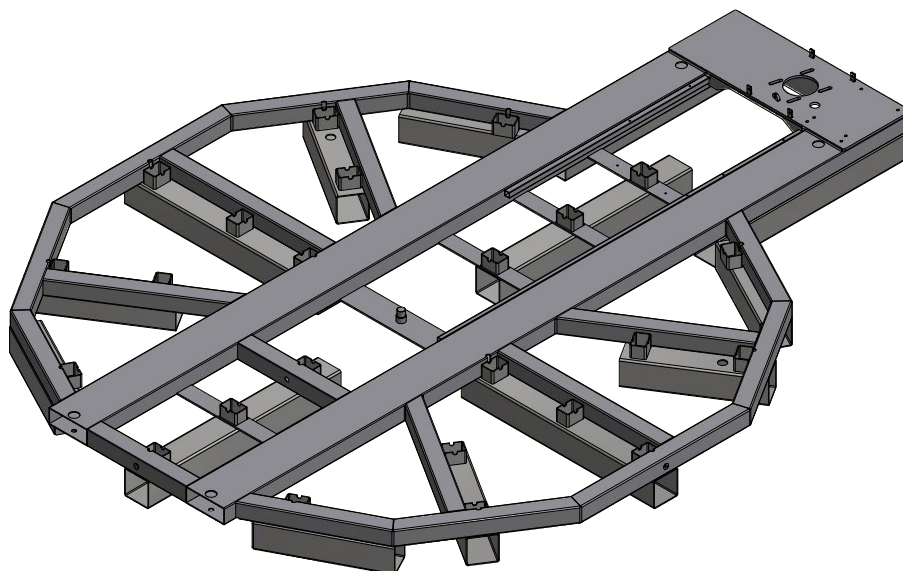
For the rest of the spare parts, please see chapter "D".

POS.	PART NO.	DESCRIPTION	Q.	NOTICE
2	210473	BEAM Ø2200	1	

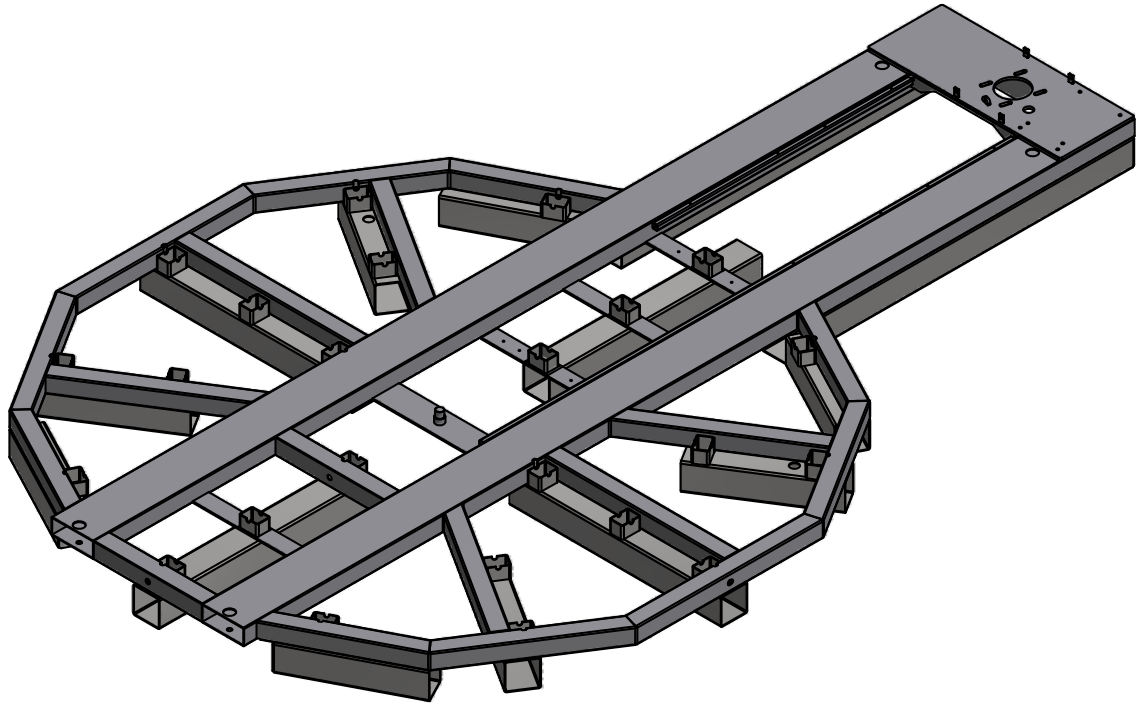
210404 - ELEVATED CHASSIS Ø1650



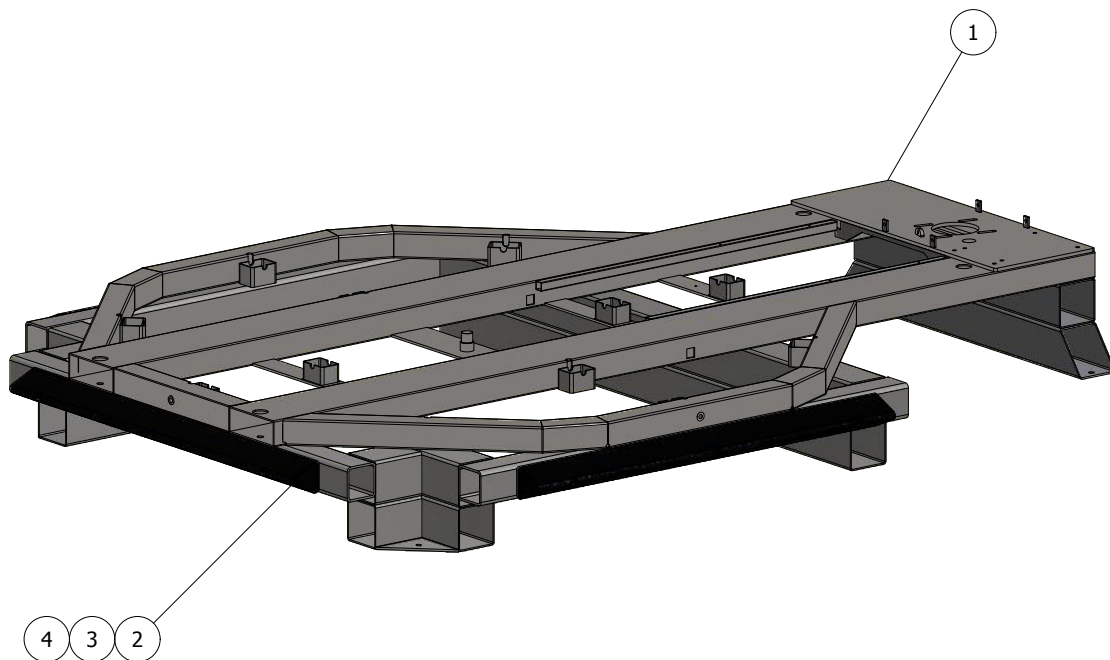
210495 - ELEVATED CHASSIS Ø2200



210490 - ELEVATED CHASSIS Ø2200 + 500mm

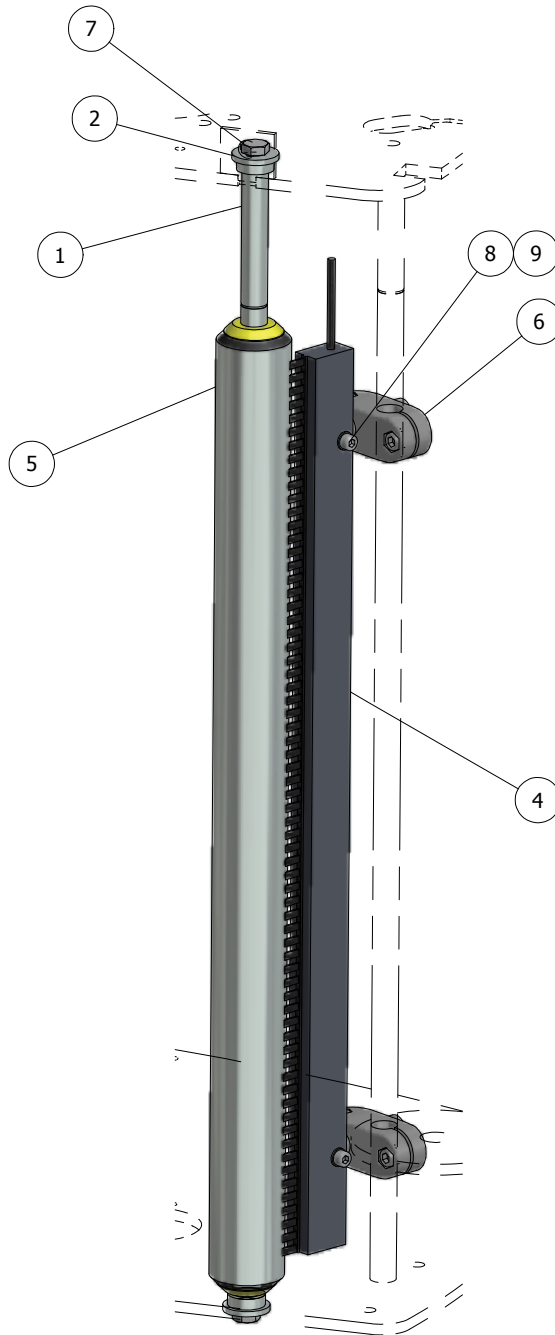


210556 - CHASSIS WITH IMPACT PROTECTION



POS.	PART NO.	DESCRIPTION	Q.	NOTICE
1	371953	BOTTOM UNIT CTT 1650	1	
2	401096	IMPACT PROTECTION	3	
3	460108	SCREW MC6S M8x16	9	
4	460201	WASHER BRB 8.4	9	

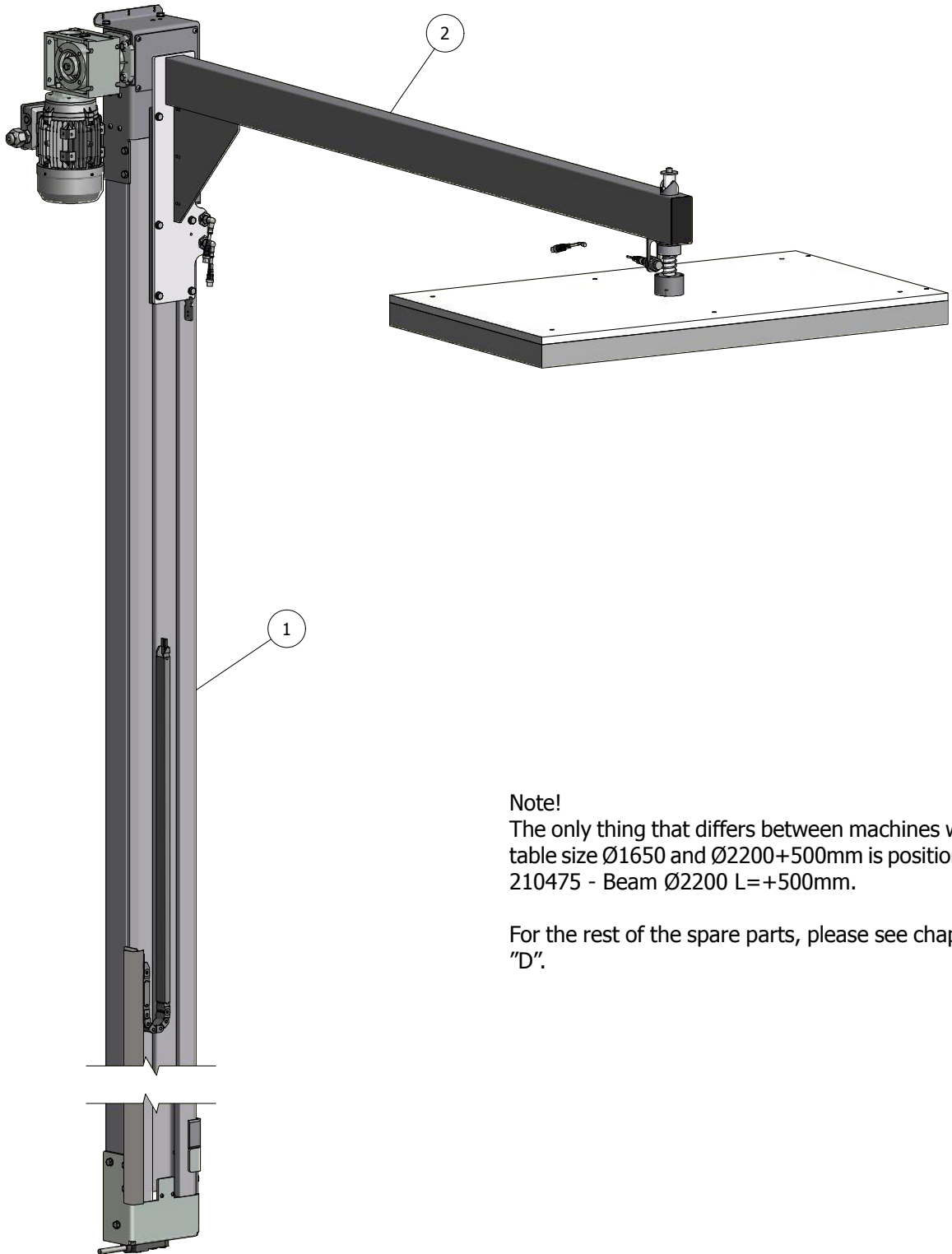
210427 - PASSIVE ANTI-STATIC . SEMI AUTOMATIC



POS.	PART NO.	DESCRIPTION	Q.	NOTICE
1	312097	DISTANCE SHAFT	1	
2	370204	Reducers	2	
3	371236	HOLDER	2	
4	371237	PASSIVE ANTI-STATIC	1	
5	400326	TRANSPORT ROLLER	1	
6	401653	PIPE CONNECTION	2	
7	460017	SCREW M6S M8x16	2	
8	460083	SCREW MC6S M5x25	2	
9	460199	WASHER BRB 5.3	2	

Rev. No: A

210532 - TOPPLATE RECTANGULAR CTT2x5 Ø 2200 L= +500mm



Note!

The only thing that differs between machines with table size Ø1650 and Ø2200+500mm is position 2. 210475 - Beam Ø2200 L=+500mm.

For the rest of the spare parts, please see chapter "D".

POS.	PART NO.	DESCRIPTION	Q.	NOTICE
2	210475	BEAM Ø2200 L=+500mm	1	

DI-ZET

Praktyczne rozwiązania w systemach pakowania

DI-ZET Sp. J.
Ul. Patriotów 24
04-933 Warszawa

tel. 22/517-35-80/90
e-mail: di-zet@di-zet.pl